



UNITED STATES MARINE CORPS
MARINE CORPS INSTALLATIONS EAST-MARINE CORPS BASE
PSC BOX 20005
CAMP LEJEUNE NC 28542-0005

MCIEAST-MCB CAMLEJO 3440.6B
G-3/5
26 NOV 2014

MARINE CORPS INSTALLATIONS EAST-MARINE CORPS BASE CAMP LEJEUNE ORDER 3440.6B

From: Commanding General
To: Distribution List

Subj: DESTRUCTIVE WEATHER PROCEDURES

Ref: (a) MCO 3040.4
(b) MCO 3440.7B (NOTAL)
(c) MCO 3504.2A
(d) MCIEAST-MCB CAMLEJO 3440.1A
(e) MCIEAST MCB CAMLEJO 3000.10
(f) MCIEAST-MCB CAMLEJO 11100.5

Encl: (1) Destructive Weather Procedures
(2) Reports Required

1. Situation. This Order promulgates guidance, information, and procedures for use in the event of destructive weather.

2. Cancellation. MCIEAST-MCB CAMLEJO 3440.6A.

3. Mission

a. Marine Corps Installations East-Marine Corps Base, Camp Lejeune (MCIEAST-MCB CAMLEJ) publishes parameters to organize and facilitate preparation, mitigation, response, recovery, and reporting in connection with destructive weather events at MCB CAMLEJ in order to save lives, prevent suffering, and to mitigate property loss and disruptions to mission accomplishment.

b. Directive Defined. Reference (a) is the Marine Corps Casualty Assistance Program. Reference (b) provides policy, planning guidance, and assignment of responsibilities in response to requests for assistance from civil authorities during presidential declared or undeclared disasters and domestic emergencies. Reference (c) provides instructions for reporting operations events or incidents reports via an Operations Event/Incident Report, Serious Incident Report (OPREP-3 SIR) to the Commandant of the Marine Corps and the National Command Authorities on matters involving Marine Corps personnel, units, or installations. Reference (d) is the Destructive Weather Operations Order. Reference (e) provides information and instructions for the establishment of the MCIEAST-MCB CAMLEJ Emergency Operations Center (EOC). Reference (f) provides designation, responsibilities, police, and authority of Area Commanders.

c. Summary of Revision. This Order has been revised and contains a number of changes. It is recommended that this Order be reviewed in its entirety.

DISTRIBUTION STATEMENT A: Approved for public release; distribution is unlimited.

2 6 NOV 2014

4. Execution

a. Commander's Intent and Concept of Operations

(1) Commander's Intent

(a) To ensure those personnel involved in the administration and execution of destructive weather mitigation, preparation, response, and recovery actions are provided adequate information pertaining to tactics, techniques, and procedures.

(b) The Commanding General (CG), MCIEAST-MCB CAMLEJ, is responsible for disaster preparation, mitigation, response, and recovery operations aboard MCB CAMLEJ and, as such, will order the execution of applicable aspects of this Order as required by any potential or actual destructive weather emergency. The CG's tasking authority will be exercised through the MCIEAST-MCB CAMLEJ EOC, including the authority to task Area Commanders and II Marine Expeditionary Force (MEF) assets through the II MEF Destructive Weather Operations Center (DWOC).

(2) Concept of Operations. This Order should be used in conjunction with the references and other current regulations and directives to ensure compliance with established policies, procedures, and higher headquarters guidance. Deviations from procedures and instructions must be approved by, or referred to, the CG (Attn: Assistant Chief of Staff (AC/S), G-3/5 (Operations and Plans Division, Operations and Training Department)).

b. Subordinate Element Missions. Refer to enclosure (1).

5. Administration and Logistics

a. Reports required by this Order are listed in enclosure (2).

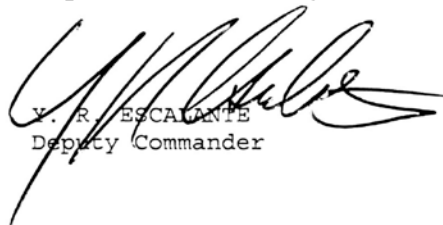
b. Recommendations for changes to this Order are invited and should be submitted to CG (Attn: AC/S, G-3/5 Operations and Plans Division, Operations and Training Department).

c. This Order has been coordinated with and received concurrence by the CG, II MEF.

6. Command and Signal

a. Command. This Order is applicable to MCB CAMLEJ, and its subordinate and tenant commands.

b. Signal. This Order is effective upon the date signed.


Y. R. ESCALANTE
Deputy Commander

DISTRIBUTION: A/C

2 6 NOV 2014

LOCATOR SHEET

Subj: DESTRUCTIVE WEATHER PROCEDURES

Location: _____
(Indicate location(s) of copy(ies) of this Order.)

RECORD OF CHANGES

Log completed change action as indicated.

Change Number	Date of Change	Date Entered	Signature of Person Incorporated Change

2 6 NOV 2014

TABLE OF CONTENTS

<u>IDENTIFICATION</u>	<u>TITLE</u>	<u>PAGE</u>
Chapter 1	MISSION AND EXECUTION.....	1-1
1.	General.....	1-1
2.	Scope.....	1-1
3.	Situation.....	1-1
4.	Mission.....	1-1
5.	Execution.....	1-1
Chapter 2	DEFINITIONS AND TERMS.....	2-1
1.	General.....	2-1
2.	Scope.....	2-1
3.	Definitions and Terms.....	2-1
Figure 2-1	Knots to mph to Meters Per Second Conversion Chart.....	2-7
Chapter 3	CONDITIONS OF READINESS, NOTIFICATION, AND ASSOCIATED TASKS.....	3-1
1.	General.....	3-1
2.	Non-Tropical Conditions of Readiness.....	3-1
3.	The Decision to Set Conditions and Notification.....	3-1
4.	Non-Tropical Conditions of Readiness Tasks.....	3-2
5.	Tropical Storm Conditions of Readiness.....	3-4
6.	Notification.....	3-6
7.	Tropical Cyclone Conditions of Readiness Tasks.....	3-6
Figure 3-1	Snow or Ice Storm Decision/Notification Matrix for Unanticipated Winter Storm Events	3-4
Figure 3-2	Tropical Cyclone Condition Task Manager.....	3-7
Chapter 4	MCIEAST-MCB CAMLEJ EOC.....	4-1
1.	General.....	4-1
2.	Task Organization.....	4-1
3.	Reporting Instructions and Shift Change for Tropical Cyclones.....	4-1
4.	Reporting Instructions and Shift Change for Non-Tropical Storms.....	4-2
Chapter 5	VEHICLE, EQUIPMENT, AND PERSONNEL AUGMENTATION.....	5-1
1.	General.....	5-1
2.	DWTF.....	5-1
3.	DCRC Augmentation.....	5-7
4.	Emergency Power Generation.....	5-10
5.	Emergency Feeding/MRE Distribution Plan.....	5-12
Figure 5-1	Communications and Information-Equipment and Personnel..	5-3
Figure 5-2	Tactical Vehicles, Equipment, and Personnel.....	5-4

TABLE OF CONTENTS

<u>IDENTIFICATION</u>	<u>TITLE</u>	<u>PAGE</u>
Figure 5-3	Tactical Vehicles (Ambulance), Equipment, and Personnel.	5-6
Figure 5-4	Tactical Vehicles (AAV), Equipment, and Personnel.....	5-6
Figure 5-5	Emergency Power/Generators and Personnel.....	5-7
Figure 5-6	Response/Recovery Teams.....	5-9
Figure 5-7	Response/Recovery Team Vehicle List.....	5-10
Figure 5-8	Emergency Feeding/MRE Distribution Plan.....	5-12
Chapter 6	COMMUNICATIONS.....	6-1
1.	General.....	6-1
2.	Means of Communication.....	6-1
3.	Communications Procedures.....	6-2
Figure 6-1	Communications and Information Equipment.....	6-4
Chapter 7	EMERGENCY SHELTER OPERATIONS.....	7-1
1.	General.....	7-1
2.	Requirement.....	7-1
3.	Concept of Operation for Emergency Shelters.....	7-1
4.	Administration and Logistics.....	7-2
5.	Command and Signal.....	7-2

2 6 NOV 2014

Chapter 1

Mission and Execution

1. General. This Chapter contains a description of the organization of MCB CAMLEJ destructive weather operations, including mission, commander's intent, concept of operation, and tasks and responsibilities common to all MCIEAST-MCB CAMLEJ components and tenant commands. Specific information, responsibilities, and tasks are contained in Chapters 3 through 6 of this Order.

2. Scope. The information in this Order pertains to destructive weather operations aboard the Base and its satellite camps (Camp Geiger, Courthouse Bay, Stone Bay, and Camp Johnson). The Base staff, its component commands, and the tenants of the installation shall ensure that the responsibilities and subsequent tasks are incorporated into their organizational functions and plans.

3. Situation. The Base and the surrounding off-base areas of interest are susceptible to a wide variety of destructive weather events year-round. Some of these events can be forecasted, thus allowing for deliberate preparation, while others appear with little or no warning.

4. Mission. MCB CAMLEJ takes and coordinates measures to minimize the impacts of a wide variety of destructive weather events that may affect population, infrastructure, and its ability to perform normal operations. In the event of a storm, the Base will maximize the time available before the effects of the storm are felt, assume a threat-appropriate protective posture, prepare emergency response and recovery resources to address the likely effects of the storm, and return the Base to normal operations as quickly and safely as possible.

5. Execution

a. Commander's Intent and Concept of Operation

(1) Commander's Intent. It is my intent that the information, guidance, and instruction in this Order be used to coordinate destructive weather operations aboard MCB CAMLEJ (defined as preparation, mitigation, response, and recovery) for the purpose of saving lives, preventing injury, preserving property, and minimizing a storm's impact on normal operations aboard the installation. The involvement of senior staff and commanders in all phases of Destructive Weather Operations is critical to the ultimate success of the effort.

(2) Concept of Operations

(a) The Base will conduct destructive weather operations in four phases, as follows:

1. Preparation. The Base and tenant commands develop plans and orders and conduct exercises designed to improve the quality of plans and plan execution. All activities ensure facilities and areas are kept in good repair and police.

2. Mitigation. The Base and tenant commands assume protective postures ahead of, or upon the arrival of destructive weather so as to take advantage of any reasonable opportunity, under the circumstances, to reduce damage, injury, or loss.

3. Response. Base emergency responders and emergency managers react to address life/safety issues and limit damage to infrastructure and property during, and in the immediate wake of, the destructive weather system.

4. Recovery. The Base assesses damage, clears roads, and restores utilities to return the Base to normal safe operating conditions as quickly as possible. Emergency services resupplies, rests, and repairs to reconstitute the Base's emergency response capability as quickly as possible.

(b) Due to the inherent differences between winter, tropical, and non-tropical weather events, and in particular the resultant differences in advance notice that can be reasonably expected with each type of event, three applications of the basic concept of operations have been developed. The three applications are the Non-Tropical Storm/System Plan, the Tropical Cyclone Plan, and the Winter Storm Plan.

1. Non-Tropical Storm/System Plan. Non-Tropical Storms/Systems include tornadoes, severe thunder and lightning, strong winds, snow or ice, heavy rain, and flooding. It is critical that personnel are instructed on what to do and are familiar with the protective postures which should be assumed in the event of a short-notice weather emergency. The basic concept of operations is applied for non-tropical storms as follows:

a. Preparation. Due to the short-notice appearance of Non-Tropical Storms/Systems, preparations for these types of weather events largely depend on good day-to-day work place practices such as police, maintenance, and industrial safety. Objects that can be moved by strong winds, doors, and windows that do not close properly, roofs that leak, and fouled storm drains can all multiply the damaging effects of any destructive weather event.

b. Mitigation. The assumption of an appropriate protective posture or the cessation of at-risk activities once a storm or system has presented itself is critical to the reduction of injuries connected to a storm. All activities are strongly advised to observe the watch/warning system used by the National Weather Service (NWS) and adopted in this Order. When a watch is issued, leaders and planners must think through the danger their personnel are exposed to and ensure those personnel are ready and able to assume a proper protective posture in the event a warning is issued. Once a warning is issued, leaders and supervisors should ensure that all at-risk activities are stopped, and all assigned personnel assume an appropriate protective posture.

c. Response. During, or in the immediate wake of a serious destructive weather event, all activities and personnel should limit their movements to the greatest extent practicable. Emergencies (fire, collapse, flood, or casualty) that become apparent during the course of the storm should be reported using 911 procedures. Emergency response under storm conditions should be left to trained emergency responders if at all possible.

2 6 NOV 2014

d. Recovery. Recovery begins once the Base has completed its initial assessment of damage and communicates an "all clear." All personnel should be aware that even minor storms can create conditions of great danger. All activities should conduct detailed inspections for damage before resuming normal operations.

2. Tropical Cyclone Plan. Tropical Cyclones (Hurricanes and Tropical Storms) are generally seasonal, able to be forecasted several days ahead of the effects, are of long duration, and are potentially extremely damaging over a very wide area. Due to the forecast ability of these systems and their potential for destructive power, it is both possible and prudent for the Base and its tenants to make deliberate preparations as the cyclone approaches. The following basic concept of operations is applied for tropical cyclones:

a. Preparation. Chapter 3, paragraph 5 of this Order describes a system of conditions of readiness used by the Base to organize and phase its preparation as a tropical cyclone approaches. This process begins when an identified system is forecasted to possibly affect the Base within 72 hours (Condition IV). As a cyclone approaches, the condition changes (Condition III at 48 hours out and Condition II at 24 hours out). With each change of condition comes a corresponding increase in the Base's level of preparation. At Condition II, the Base will mobilize additional resources to augment the normal force of first responders, establish emergency shelters, and activate its EOC to manage operations during the emergency and coordinate actions during the early phases of recovery.

b. Mitigation. As the arrival of the cyclone becomes imminent (Conditions I and I Caution, 12 and six hours out, respectively) the actions associated with the conditions direct that the Base assume a posture designed to minimize the exposure of personnel, equipment, and facilities to the danger associated with the cyclone.

c. Response. During, or in the immediate wake of a tropical cyclone, activities and personnel should limit their movements to the greatest extent practicable. Emergencies (fire, collapse, flood, or casualty) that become apparent during the course of the cyclone should be reported using 911 procedures. Emergency response under cyclone conditions should be left to trained emergency responders working under the direction of the Base 911 Center and EOC. The Base EOC will remain active throughout the cyclone to closely monitor developments and direct the emergency management effort.

d. Recovery. As the tropical cyclone passes and the weather allows, the Base EOC will supervise an initial damage assessment and address any serious safety concerns that result from the cyclone before sounding an all clear and allowing the Base and its tenants to begin local inspections and clean up (Condition I Recovery). It is important that all activities exercise extreme caution during recovery operations and conduct detailed inspections for damage before resuming normal operations. Serious and/or dangerous conditions that result from the cyclone should be reported to the EOC to ensure that properly trained and equipped teams are assigned to the task. Recovery ends when the CG assesses that serious and apparent damage that poses a safety threat to the general population has been satisfactorily addressed. Resources mobilized in preparation for the cyclone are demobilized and the EOC is closed. It must be understood that hidden

2 6 NOV 2014

dangers may exist and normal services may be significantly degraded for some time after the end of the recovery phase.

3. Winter Storm Plan

a. Preparation. Chapter 3, paragraph 2 of this Order describes a system of conditions of readiness used by the Base to organize and phase its preparation as a winter storm approaches. This process begins when a system is forecasted to affect the Base within 24 hours (Winter Storm Condition II). As a system approaches, the condition changes (Condition I at six hours). With the establishment of each condition comes a corresponding increase in the Base's level of preparation. Chapter 3, paragraph 4 specifies tasks to be accomplished in each Winter Storm Condition. Critical to the Base's preparation for the storm is the activation of the Crisis Management Team (CMT) during Winter Storm Condition II. It will be the CMT's chief task to assess the forecast, estimate the storm's impact on operations, and to establish a timeline for preparations and mitigations appropriate to the specific event.

b. Mitigation. As the arrival of a winter storm becomes imminent (Condition I, six hours out), the Base assumes a posture designed to minimize the exposure of personnel, equipment, and facilities to the danger associated with the winter conditions. It should be understood that snow and ice accumulations are a relative rarity in eastern North Carolina (NC), and it is not considered economically feasible for NC Department of Transportation, Onslow County, the City of Jacksonville, and the Base to maintain more than minimal resources suitable for snow and ice removal. Therefore, tenants should expect that snow and particularly ice accumulations will lead to significant reduction in all but essential Base services until the snow and ice melt and the danger to travel passes. A list of services generally considered to be essential and which the Base will endeavor to maintain during adverse weather appears below:

- (1) Mess Hall service
- (2) Marine Mart service
- (3) Emergency maintenance and repair to Public Works services (water, electricity, steam)
- (4) Essential and emergency communications support (telephone and network operation and emergency maintenance)
- (5) Emergency hospital services
- (6) Fire, emergency, and police services
- (7) Support at training facilities/ranges when previously coordinated with and approved by the MCIEAST-MCB CAMLEJ, AC/S, G-3/5

c. Response. During, or in the immediate wake of a winter storm, activities and personnel should limit their movements to the greatest extent practicable. Emergencies (fire, collapse, flood, or casualty) that become apparent during the course of the winter storm should be reported using 911 procedures. Emergency response under winter storm conditions

2 6 NOV 2014

should be left to trained emergency responders working under the direction of the Base 911 Center and EOC.

d. Recovery. As the winter storm passes and the weather allows, the Base Security and Emergency Services Department Operations Center (DOC) or the Base EOC will supervise an initial damage assessment and address any serious safety concerns that result from the winter storm before sounding an all clear and allowing the Base and its tenants to begin local inspections and clean up. It is important that all activities exercise extreme caution during recovery operations and conduct detailed inspections for damage before resuming normal operations. Serious and/or dangerous conditions that result from the winter storm should be reported to the 911 Center or Base EOC to ensure that properly trained and equipped teams are assigned to the task. Recovery ends when the CG assesses that the dangerous conditions (primarily ice and snow accumulations on roads) have been sufficiently addressed to allow safe use of roads on and in the immediate vicinity of the Base. It must be understood that hidden dangers may exist and normal services may be significantly degraded for some time after the end of the recovery phase. Additionally, it must be realized that the CG must take into consideration the condition of local roads off-base and the risks incurred by restoring the Base to normal operations too quickly.

b. Tasks Common to All MCIEAST-MCB CAMLEJ Component and Tenant Commands

(1) Identify and ensure the availability of all resources (personnel, equipment, and services) required to execute tasks associated with destructive weather operations contained in this Order. Be prepared to provide resources.

(2) Continually review military, civilian, and contractor personnel requirements throughout the Atlantic Hurricane Season and identify billets as essential or non-essential.

(3) Develop recall procedures for essential military, civilian, and contractor personnel.

(4) Develop release procedures for non-essential military, civilian, and contractor personnel.

(5) Develop internal information dissemination and notification procedures.

(6) Participate in the annual MCIEAST-MCB CAMLEJ Local Destructive Weather Exercise conducted by the AC/S, G-3/5. Conduct internal exercises as required.

(7) Disseminate the setting of destructive weather conditions of readiness (both tropical and non-tropical).

(8) Execute the tasks associated with the appropriate destructive weather conditions of readiness contained in Chapter 3 of this Order. Prepare to execute tasks associated with subsequent destructive weather conditions of readiness.

(9) Maintain facilities, buildings, structures, grounds, equipment, and materials in a state of readiness for non-tropical storms as appropriate

2 6 NOV 2014

for the time of year. Be prepared to elevate your protective posture (in accordance with detailed instruction found in Chapter 3 of this Order) upon receipt of a weather warning and/or watch.

(10) Ensure all assigned personnel are aware of the appropriate protective measures to be taken in the event of a short- or no-notice destructive weather event.

(11) Conduct and report hazard, casualty, and damage assessments immediately after any destructive weather event and before initiating recovery actions and resuming normal operations.

(12) Conduct a unit/activity-level debrief after every destructive weather event, and when appropriate, submit a Destructive Weather After Action Report via the chain of command to the AC/S, G-3/5.

26 NOV 2014

Chapter 2

Definitions and Terms

1. General. Definitions and terms used in this Order are standard throughout the Department of Defense (DoD) and the NWS and are authorized for use in official messages, records, correspondence, and dealings with other Government agencies or individuals.

2. Scope. Destructive or severe weather can occur at any time. Analysis of meteorological and oceanographic data for this area indicates that the most serious damage comes from storms of tropical origin, such as tropical cyclones and tropical storms where winds of destructive force are sustained for long periods of time. Storms of non-tropical origin (gales, thunderstorms, tornadoes) are of shorter duration and generally localized in nature. The annual Atlantic Hurricane Season for the MCB CAMLEJ area is from 1 June through 30 November. The period of 1 December through 15 March has been established as the snow and ice storm season for coastal, southeastern NC.

3. Definitions and Terms. An understanding of the meaning of the terms defined below is critical for proper planning and operations in destructive weather situations. A knots to miles per hour (mph) to meters per second conversion chart is provided for reference purposes (see Figure 2-1).

a. Tropical Storm Systems

(1) Tropical Depression. A tropical system with sustained wind speeds to 33 knots that is expected to intensify. Tropical depressions will be identified by numbers with the first tropical depression of the calendar year being Tropical Depression One.

(2) Tropical Storm. A tropical system with sustained wind speeds from 34 to 63 knots (39 to 72 mph). Tropical storms will be issued names for tracking purposes with the first tropical storm of the calendar year being issued a name starting with the letter "A" and proceeding through the alphabet with each sequential storm for the season.

(3) Hurricane. A tropical system with sustained wind speeds of 64 knots (74 mph) or greater.

(a) Category I Hurricane. Sustained winds of 64 to 82 knots (74 to 95 mph).

(b) Category II Hurricane. Sustained winds of 83 to 95 knots (96 to 109 mph).

(c) Category III Hurricane. Sustained winds of 96 to 113 knots (110 to 130 mph).

(d) Category IV Hurricane. Sustained winds of 114 to 135 knots (131 to 155 mph).

(e) Category V Hurricane. Sustained winds above 135 knots (155 mph).

2 6 NOV 2014

b. Non-Tropical Storm Systems

(1) Gale. A non-tropical windstorm with sustained surface winds of 34 to 47 knots (39 to 54 mph).

(2) Storm. Any disturbed state of the atmosphere, especially affecting the Earth's surface, and strongly implying destructive and otherwise unpleasant weather. Storms range in scale from tornadoes and thunderstorms to tropical cyclones to synoptic-scale extra-tropical cyclones.

(3) Severe Local Storm. A convective storm that usually covers a relatively small geographic area, or moves in a narrow path, and is sufficiently intense to threaten life and/or property. Examples include severe thunderstorms with large hail, damaging wind, or tornadoes. Although cloud-to-ground lightning is not a criteria for severe local storms, it is acknowledged to be highly dangerous and a leading cause of deaths, injuries, and damage from thunderstorms. A thunderstorm need not be severe to generate frequent cloud-to-ground lightning. Additionally, excessive localized convective rains are not classified as severe storms, but often are the product of severe local storms. Such rainfall may result in related phenomena (flash floods) that threaten life and property.

(4) Nor'easter. A non-tropical cyclonic storm occurring on the east coast of North America, so-called because the winds over the coastal area are from the northeast. Nor'easters may occur at any time of the year, but are most frequent and intense from September through April. They typically develop within 100 miles of the coast and generally progress northward to northeastward, and typically attain maximum intensity near New England and the Canadian Maritime Provinces. Abundant precipitation and winds of gale force or higher are associated with a Nor'easter.

(5) Thunderstorm. A storm accompanied by thunder and lightning with wind gusts of less than 50 knots (58 mph) and/or hail less than one inch at the surface.

(6) Severe Thunderstorm. A thunderstorm that produces a tornado, winds of at least 50 knots (50 mph), and/or hail at least one inch in diameter. Structural wind damage may imply the occurrence of a severe thunderstorm. A thunderstorm's wind equal to or greater than 35 knots, and/or hail of at least one inch, is defined as approaching severe.

(7) Tornado. A tornado is a violently rotating column of air, usually in the form of a funnel, extending from a thunderstorm. Tornadoes are one of the most destructive types of storms known and, by definition, touch and track along the ground with winds estimated at 100 to more than 250 knots (115 to 288 mph), and updrafts of 75 to 175 knots (86 to 201 mph). Tornadoes move at speeds of approximately 20 to 35 knots (23 to 40 mph) and have an average lifespan of 20 minutes. However, it is not uncommon for several tornadoes to develop, either in clusters or in succession, from the same parent thunderstorm, or line of thunderstorms, and may last for several hours. Tornadoes are most often associated with the violent storm systems containing heavy rain, lightning, and hail.

2 6 NOV 2014

The intensity of tornadoes is defined according to the Fujita Scale (F Scale), which range from F0 to F6: F0 Tornado - wind speeds of 35 to 62 knots (40 to 71 mph); F1 Tornado - wind speeds of 63 to 97 knots (72 to 112 mph); F2 Tornado - wind speeds of 98 to 136 knots (113 to 157 mph); F3 Tornado - wind speeds of 137 to 179 knots (158 to 206 mph); F4 Tornado-wind speeds of 180 to 226 (207 to 260 mph) knots; F5 Tornado - wind speeds of 227 to 276 knots (261 to 318 mph); and F6 Tornado - wind speeds of 277 knots (319 mph) or greater.

(8) Snowstorm. Snowfall with an accumulation of two or more inches that may also involve freezing rain or sleet.

(9) Ice Storm. The term "ice storm" is used to describe occasions when damaging accumulations of ice are expected during freezing rain situations. Significant accumulations of ice may pull down trees and utility lines resulting in loss of power and communication. These accumulations of ice make walking and driving extremely dangerous. Significant ice accumulations are usually accumulations of one quarter of an inch or greater.

c. Miscellaneous Terms. The following terms are related to major and local storm systems. These terms supplement the above to provide a full explanation of the weather information that may be passed.

(1) Waterspout. A tight rotary windstorm over water.

(2) Funnel Cloud. A tight rotary windstorm that does not touch the ground.

(3) Storm Surge. An abnormal rise in sea level accompanying a hurricane or other intense storm with a height difference between the observed level of the sea surface and the level that would have occurred in the absence of the cyclone. A storm surge is usually estimated by subtracting the normal or astronomic tide from the observed storm tide.

(4) Storm Tide. The actual level of sea water resulting from the astronomic tide combined with the storm surge. Most NWS flood statements, watches, or warnings quantifying above-normal tides will report the Storm Tide.

(5) Flood. The inundation of areas not normally submerged caused by torrential rain and/or storm tide and capable of extensive damage in low-lying areas.

d. Watches and Warnings

(1) Tropical Systems

(a) Tropical Storm Watch. Issued by the National Hurricane Center (NHC) when there is a possibility that tropical storm conditions will occur in the watched area within 48 hours.

(b) Tropical Storm Warning. Issued by the NHC when tropical storm conditions are expected to occur at the warned location within 36 hours.

(c) Hurricane Watch. Issued by the NHC when there is a possibility that hurricane conditions will occur in the watched area within 48 hours.

2 6 NOV 2014

(d) Hurricane Warning. Issued by the NHC when hurricane conditions are expected to occur at the warned location within 36 hours.

(2) Non-Tropical Systems

(a) Gale Watch. A watch for an increased risk of a gale force wind event for sustained surface winds, or frequent gusts, of 34 to 47 knots (39 to 54 mph), but its occurrence, location, and/or timing is still uncertain.

(b) Gale Warning. A warning of sustained surface winds, or frequent gusts, in the range of 34 to 47 knots (39 to 54 mph), either predicted or occurring, and not directly associated with a tropical cyclone.

(c) Storm Watch. A watch for an increased risk of a storm force wind event for sustained surface winds, or frequent gusts, of 48 knots to 63 knots (55 to 73 mph), but its occurrence, location, and/or timing is still uncertain.

(d) Storm Warning. A warning of sustained surface winds, or frequent gusts, in the range of 48 to 63 knots (55 to 73 mph) inclusive, either predicted or occurring, and not directly associated with a tropical cyclone. After it has been issued, the affected NWS Forecast Office (NWSFO) will follow it up periodically with Severe Weather Statements.

(e) Severe Local Storm Watch. An alert issued by the NWS for the contiguous U.S. and its adjacent waters of the potential for severe thunderstorms or tornadoes.

(f) Small Craft Advisory (SCA). An advisory issued by coastal and Great Lakes Weather Forecast Offices for areas included in the Coastal Waters Forecast or Near Shore Marine Forecast products. Thresholds governing the issuance of SCAs are specific to geographic areas. A SCA may also be issued when sea or lake ice exists that could be hazardous to small boats. There is no precise definition of a small craft. Any vessel that may be adversely affected by SCA criteria should be considered a small craft. Other considerations include the experience of the vessel operator and the type, overall size, and seaworthiness of the vessel. Normally, in the Eastern Region (Maine to South Carolina, Lake Erie, Lake Ontario), SCAs are issued when sustained winds or frequent gusts ranging between 25 and 33 knots (29 to 38 mph) (except 20 to 25 knots, lower threshold area dependent, to 33 knots (38 mph) for harbors, bays, etc.) and/or seas or waves five to seven feet and greater are expected, area dependent.

(g) Snow Advisory. This advisory is issued by the NWS when a low pressure system produces snow that may cause significant inconveniences, but does not meet warning criteria and, if caution is not exercised, could lead to life-threatening situations. The advisory criteria vary from area to area. If the forecaster feels that it is warranted, they can issue it for amounts less than the minimum criteria. For example, it may be issued for the first snow of the season or when snow has not fallen in long time.

(h) Ice Storm Warning. This warning is issued by the NWS when freezing rain produces a significant and possibly damaging accumulation of ice. The criteria for this warning varies from state to state, but typically will be issued any time more than one quarter of an inch of ice is expected to accumulate in an area.

(i) Winter Storm Warning. This warning is issued by the NWS when a winter storm is producing, or is forecasted to produce, heavy snow or significant ice accumulations. The criteria for this warning can vary from place to place.

(j) Winter Storm Watch. This watch is issued by the NWS when there is a potential for heavy snow or significant ice accumulations, usually at least 24 to 36 hours in advance. The criteria for this watch can vary from place to place.

(k) Severe Thunderstorm Watch

1. This watch is issued by the NWS when conditions are favorable for the development of severe thunderstorms in and close to the watch area. A severe thunderstorm, by definition, is a thunderstorm that produces three quarters of an inch hail or larger in diameter and/or winds equal or exceeding 50 knots (58 mph). The size of the watch can vary depending on the weather situation. They are usually issued for a duration of four to eight hours. They are normally issued well in advance of the actual occurrence of severe weather. During the watch, people should review severe thunderstorm safety rules and be prepared to move to a place of safety if threatening weather approaches.

2. A Severe Thunderstorm Watch is issued by the Storm Prediction Center (SPC) in Norman, Oklahoma. Prior to the issuance of a Severe Thunderstorm Watch, SPC will usually contact the affected local NWSFO, and discuss the weather situation. Afterwards, SPC will issue a preliminary Severe Thunderstorm Watch, and the affected NWSFO will adjust the watch (adding or eliminating counties/parishes) and issue it to the public by way of a Watch Redefining Statement. During the watch, the NWSFO will keep the public informed on what is happening in the watch area and when the watch has expired or been cancelled.

(l) Severe Thunderstorm Warning

1. This warning is issued when either a severe thunderstorm is indicated by the WSR-88D radar, or a spotter reports a thunderstorm producing hail three quarters of an inch or larger in diameter and/or winds equal or exceeding 50 knots (58 mph); therefore, people in the affected area should seek safe shelter immediately. Severe thunderstorms can produce tornadoes with little or no advance warning. Lightning frequency is not a criterion for issuing a severe thunderstorm warning. They are usually issued for a duration of one hour. They can be issued without a Severe Thunderstorm Watch being already in effect.

2. Like a Tornado Warning, the Severe Thunderstorm Warning is issued by the NWSFO. Severe Thunderstorm Warnings will include where the storm was located, what towns will be affected by the severe thunderstorm, and the primary threat associated with the severe thunderstorm warning.

2 6 NOV 2014

If the severe thunderstorm will affect the near-shore or coastal waters, it will be issued as the combined product: Severe Thunderstorm Warning and Special Marine Warning. If the severe thunderstorm is also causing torrential rains, this warning may also be combined with a Flash Flood Warning. If there is an ampersand (&) symbol at the bottom of the warning, it indicates that the warning was issued as a result of a severe weather report. After it has been issued, the affected NWSFO will follow it up periodically with Severe Weather Statements. These statements will contain updated information on the severe thunderstorm and will also let the public know when the warning is no longer in effect.

(m) Tornado Watch

1. This is issued by the NWS when conditions are favorable for the development of tornadoes in and close to the watch area. Their size can vary depending on the weather situation. They are usually issued for a duration of four to eight hours. They normally are issued well in advance of the actual occurrence of severe weather. During the watch, people should review tornado safety rules and be prepared to move to a place of safety if threatening weather approaches.

2. A Tornado Watch is issued by the SPC in Norman, Oklahoma. Prior to the issuance of a Tornado Watch, SPC will usually contact the affected local NWSFO, and they will discuss the weather situation. Afterwards, SPC will issue a preliminary Tornado Watch, and the affected NWSFO will adjust the watch (adding or eliminating counties/parishes) and issue it to the public. After adjusting the watch, the NWSFO will let the public know which counties are included by way of a Watch Redefining Statement. During the watch, the NWSFO will keep the public informed on what is happening in the watch area and when the watch has expired or been cancelled.

(n) Tornado Warning

1. This is issued when a tornado is indicated by the WSR-88D radar or sighted by spotters; therefore, people in the affected area should seek safe shelter immediately. They can be issued without a Tornado Watch being already in effect. They are usually issued for a duration of around 30 minutes.

2. Tornado Warnings are issued by local NWSFOs. It will include where the tornado was located, and what towns will be in its path. If the tornado will affect the near-shore or coastal waters, it will be issued as the combined product: Tornado Warning and Special Marine Warning. If the thunderstorm which is causing the tornado is also producing torrential rains, this warning may also be combined with a Flash Flood Warning. If there is an ampersand (&) symbol at the bottom of the warning, it indicates that the warning was issued as a result of a severe weather report. After it has been issued, the affected NWSFO will follow it up periodically with Severe Weather Statements. These statements will contain updated information on the tornado, and when the warning is no longer in effect.

2 6 NOV 2014

Knots to mph to Meters Per Second Conversion Chart

Knots	mph	m/sec	Knots	mph	m/sec
1	1.2	0.5	51	58.7	26.3
2	2.3	1.0	52	59.8	26.8
3	3.5	1.5	53	61.0	27.3
4	4.6	2.1	54	62.1	27.8
5	5.8	2.6	55	63.3	28.3
6	6.9	3.1	56	64.4	28.8
7	8.1	3.6	57	65.6	29.3
8	9.2	4.1	58	66.7	29.9
9	10.4	4.6	59	67.9	30.4
10	11.5	5.1	60	69.0	30.9
11	12.7	5.7	61	70.2	31.4
12	13.8	6.2	62	71.3	31.9
13	15.0	6.7	63	72.5	32.4
14	16.1	7.2	64	73.7	32.9
15	17.3	7.7	65	74.8	33.5
16	18.4	8.2	66	76.0	34.0
17	19.6	8.8	67	77.1	34.5
18	20.7	9.3	68	78.3	35.0
19	21.9	9.8	69	79.4	35.5
20	23.0	10.3	70	80.6	36.0
21	24.2	10.8	71	81.7	36.6
22	25.3	11.3	72	82.9	37.1
23	26.5	11.8	73	84.0	37.6
24	27.6	12.4	74	85.2	38.1
25	28.8	12.9	75	86.3	38.6
26	29.9	13.4	76	87.5	39.1
27	31.1	13.9	77	88.6	39.6
28	32.2	14.4	78	89.8	40.2
29	33.4	14.9	79	90.9	40.7
30	34.5	15.4	80	92.1	41.2
31	35.7	16.0	81	93.2	41.7
32	36.8	16.5	82	94.4	42.2
33	38.0	17.0	83	95.5	42.7
34	39.1	17.5	84	96.7	43.2
35	40.3	18.0	85	97.8	43.8
36	41.4	18.5	86	99.0	44.3
37	42.6	19.0	87	100.1	44.8
38	43.7	19.6	88	101.3	45.3
39	44.9	20.1	89	102.4	45.8
40	46.0	20.6	90	103.6	46.3
41	47.2	21.1	91	104.7	46.8
42	48.3	21.6	92	105.9	47.4
43	49.5	22.1	93	107.0	47.9
44	50.6	22.7	94	108.2	48.4
45	51.8	23.2	95	109.3	48.9
46	52.9	23.7	96	110.5	49.4
47	54.1	24.2	97	111.6	49.9
48	55.2	24.7	98	112.8	50.4
49	56.4	25.2	99	113.9	51.0
50	57.5	25.7	100	115.1	51.5

Figure 2-1.--Knots to mph to Meters Per Second Conversion Chart
 (<http://www.srh.noaa.gov/ama/?n=conversions>)

26 NOV 2014

Chapter 3

Conditions of Readiness, Notification, and Associated Tasks

1. General. Conditions of readiness are set using the applicable term indicating wind force (e.g., Thunderstorm Condition II) and/or a specified range of wind speeds (e.g., winds of 35 to 40 knots). Unless specifically stated otherwise, conditions of readiness are based on sustained winds. Additional weather-related conditions of readiness, warnings, or advisories (e.g., Destructive Weather/Thunderstorm/Severe Thunderstorm/Tornado Condition II) are also utilized to avoid or minimize loss of life, injury, and/or damage to property.

2. Non-Tropical Conditions of Readiness. The following conditions of readiness are established for non-tropical storm systems.

a. Wind, Thunderstorm, Severe Thunderstorm, or Tornado Condition II. Condition II is set when conditions favorable for the development of severe winds, thunderstorms, severe thunderstorms, or tornadoes exist in the MCB CAMLEJ area. Condition II generally corresponds to the NWS's Watch Condition. Like the NWS's Watch Condition, Condition II is usually issued for a duration of between four and eight hours.

b. Wind, Thunderstorm, Severe Thunderstorm, or Tornado Condition I. Condition I is set when severe winds, thunderstorms, severe thunderstorms, or tornadoes exist in the MCB CAMLEJ area. Condition I generally corresponds to the NWS's warning condition. Like the NWS's Warning Condition, Condition I is usually issued for a duration of one hour.

c. Winter Storm Condition II. Condition II is set when an ice or snow storm is forecast for the MCB CAMLEJ area within 24 hours. Condition II generally corresponds to the NWS's Warning and Advisory Conditions.

d. Winter Storm Condition I. Condition I is set when an ice or snow storm is expected to affect the MCB CAMLEJ area within six hours and lasts until the storm passes and the road conditions are deemed to be safe enough to allow cautious travel. Condition I generally corresponds to the NWS's Watch Condition.

3. The Decision to Set Conditions and Notification

a. Wind, Thunderstorm, Severe Thunderstorm, or Tornado Conditions. The decision to set a non-tropical wind, thunderstorm, or tornado condition is made automatically when certain conditions are identified as existing by the NWS or Regional Meteorological and Oceanographic Center (RMC). The RMC will broadcast the existence of such conditions via its telephone notification system. Base Range Control Division is responsible for passing these conditions and warnings to units training in the field.

b. Winter Storm Conditions. The decision to set Winter Storm Conditions is made by the CG or his authorized representative. The G-3/5 will monitor forecasts, solicit staff input, and make recommendations to the CG during the lead up to the storm to ensure decisions are based on the most up-to-date weather information and as complete an understanding of ongoing operations onboard the Base as possible. The G-3/5 will broadcast the setting of Winter Storm Conditions using Non-Secure Internet Protocol Router (NIPR), Omnidirectional Telephone Network (OMNI), and mass notification.

4. Non-Tropical Conditions of Readiness Tasks

a. Wind, Thunderstorm, Severe Thunderstorm, or Tornado Condition II Tasks

(1) Disseminate the setting of Wind, Thunderstorm, Severe Thunderstorm, or Tornado Condition II.

(2) Prepare to suspend work on roofs, fences, telephone or power lines, pipelines, towers/antennas, or structural steel fabrication.

(3) Secure loose equipment and debris in your area of responsibility/work spaces to reduce damage to persons and property caused by flying debris driven by high winds. Ensure storm drains and gutters are free of debris and function properly.

(4) Prepare to secure from field training and assume appropriate protective posture.

b. Wind, Thunderstorm, Severe Thunderstorm, or Tornado Condition I Tasks

(1) Disseminate the setting of Wind, Thunderstorm, Severe Thunderstorm, or Tornado Condition I.

(2) Suspend work on roofs, fences, telephone or power lines, pipelines, towers/antennas, or structural steel fabrication.

(3) Remain alert for downed power lines, trees, debris in roadways, flood areas, and other impediments that may obstruct traffic flow. Report phone and utility outages as they occur through a Destructive Weather Phone and Utility Outage Report.

(4) Take immediate safety precautions and shelter.

(5) Secure field training, assume protective posture (where you are) immediately.

c. Winter Storm Condition II Tasks

(1) Disseminate the setting of Winter Storm Condition II.

(2) The AC/S, Security and Emergency Services (SES) monitors road conditions for emerging safety hazards and provides the CG, via the AC/S, G-3/5, with an assessment of driving conditions. (See Figure 3-1).

(3) The AC/S, G-4 ensures that auxiliary power units and generators at key infrastructure are fueled.

(4) The AC/S, Marine Corps Community Services (MCCS) reviews circumstances and provides the CG, via the G-3/5, with an assessment of impact of the forecasted storm and recommendations regarding the closing of MCCS facilities, including day care centers, recreational, and commercial facilities.

(5) All commands and activities ensure that they have salt, sand, shovels, and brooms on hand in sufficient quantities to address ice hazards in parking lots, walkways, and staircases exposed to weather.

2 6 NOV 2014

(6) All commands and activities review military, civilian, and contractor personnel requirements, and plan to reduce operations and personnel requirements to only those deemed essential.

(7) All commands and activities prepare to secure from field training. Identify to the MCIEAST-MCB CAMLEJ AC/S, G-3/5 any mission critical training or operations that need to receive support during the storm or that need special priority for rescheduling following the storm.

(8) The G-3/5 will convene the MCIEAST-MCB CAMLEJ CMT to conduct planning and coordination of specific mitigations connected to the approaching storm.

(9) The G-F publishes current snow removal priority to the G-3/5.

d. Winter Storm Condition I Tasks

(1) Disseminate the setting of Winter Storm Condition I.

(2) The AC/S, SES monitors road conditions and safety hazards and provides an appropriate "early closure/delayed opening/closure" recommendation to the G-3/5 (See Figure 3-1).

(3) A discussion between the AC/S, G-3/5, AC/S, SES, and the AC/S, G-F will result in a prioritization of sanding/salting to key intersections and bridges.

(4) The AC/S, MCCA executes the closure of MCCA facilities and services as directed by the CG.

(5) All commands and activities secure from field training.

(6) All commands and activities prepare to release all non-essential military and civilian personnel.

(7) All commands and activities minimize vehicular traffic.

(8) All personnel remain alert for downed power lines, trees, debris in roadways, flood areas, and other impediments that may obstruct traffic flow. Report phone and utility outages as they occur to the Public Works Senior Watch Officer (SWO), or 911 Emergency Services, as the situation requires.

(9) All personnel prepare to take safety precautions and shelter.

e. Vehicle Restrictions Due to Wind and Ice/Snow. The Atlantic Intercoastal Waterway Bridge to Onslow Beach will be secured to vehicle traffic when sustained wind speeds exceed 35 knots (40 mph). Additionally, vehicle movement is restricted as follows: less than 44 knots (51 mph), non-tactical vehicles are permitted; 45 to 87 knots (52 to 100 mph), tactical vehicles only; greater than 88 knots (101 mph), tactical vehicles only when responding to a life or death situation. Bridges and overpasses may be closed due to the accumulation of ice or snow that renders them unsafe in the judgment of the Provost Marshal's Office (PMO).

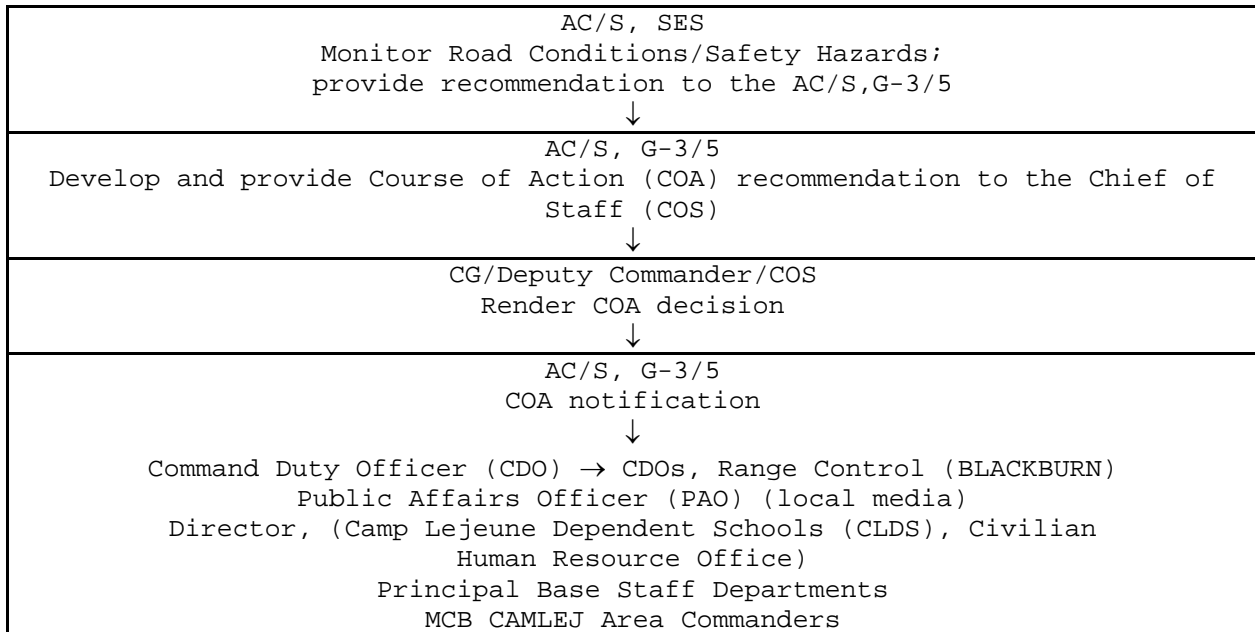


Figure 3-1.--Snow or Ice Storm Decision/Notification Matrix for Unanticipated Winter Storm Events

5. Tropical Storm Conditions of Readiness. Due to the severe nature and duration of tropical cyclones (storms and/or hurricanes), Tropical Cyclone Conditions (TCCs) are set by the CG in preparation for an approaching storm. The proper execution of tasks at each TCC ensures that a progressive state of readiness is assumed by the Installation, its components and tenants.

a. Time-oriented tasks are based upon an ongoing evaluation of the estimated time of arrival of the storm and are executed upon the setting of each TCC.

b. Event-oriented tasks are based on an ongoing evaluation of operational requirements, personnel safety, and the progress of preparation operations and will be executed only upon specific direction by the MCIEAST-MCB CAMLEJ EOC.

c. Upon setting higher conditions of readiness, commands must accomplish specific actions to enable a coordinated effort and minimize the possible effects of destructive weather. When any increased condition of readiness is established, all actions for lesser conditions of readiness must be completed before those of the higher condition can begin.

d. The G-3/5 will disseminate tropical weather information, advisories and set TCCs to all MCB CAMLEJ area commands, Base staff, tenant units, and residents by posting the applicable information on the Automated Information System, (Menu 4 - Hurricane Information), telephone (910)451-1717, and notifying appropriate commands/staff via the OMNI line and a "destructive weather e-mail distribution list." The setting of TCCs will be announced via the Defense Messaging System message via the Organization Message Service to higher headquarters, all area commands, Base staff, and tenant units. Additionally, destructive weather information will be announced via LCTV-10 and the MCIEAST-MCB CAMLEJ website.

26 NOV 2014

e. Requests to be added or deleted from the OMNI line notification system or the "destructive weather e-mail distribution list" should be submitted to the AC/S, G-3/5 (Current Operations Officer, Operations and Plans).

f. Tropical Cyclone Conditions

(1) Tropical Cyclone Condition V (TCC V). The potential for the occurrence of destructive weather is elevated, but no specific system threatens the area. TCC V indicates a seasonal destructive weather readiness level, i.e., Atlantic Hurricane Season (1 June to 30 November) is in progress or that a specific storm occurring outside of the Atlantic Hurricane Season is forecast to affect the area within 96 hours.

(2) Tropical Cyclone Condition IV (TCC IV, 72 Hours). A specific destructive weather system with sustained winds of 50 knots (58 mph) or greater is forecast to affect the area within 72 hours.

(3) Tropical Cyclone Condition III (TCC III, 48 Hours). A specific destructive weather system with sustained winds of 50 knots (58 mph) or greater is forecast to affect the area within 48 hours.

(4) Tropical Cyclone Condition II (TCC II, 24 Hours). A specific destructive weather system with sustained winds of 50 knots (58 mph) or greater is forecast to affect the area within 24 hours.

(5) Tropical Cyclone Condition I (TCC I, 12 Hours). A specific destructive weather system with sustained winds of 50 knots (58 mph) or greater is forecast to affect the area within 12 hours.

(6) Tropical Cyclone Condition I Caution (TCC IC, Six Hours). A specific destructive weather system with sustained winds of 50 knots (58 mph) or greater is forecast to affect the area within six hours.

(7) Tropical Cyclone Condition I Emergency (TCC IE). The area is currently experiencing a specific destructive weather system with sustained winds of 50 knots (58 mph) or greater.

(8) Tropical Cyclone Condition I, Recovery (TCC IR). The destructive weather system has passed the area, but safety and storm hazards remain. All orders, restrictions, and guidance established in previous TCCs remain in effect. The emergency management structure is affecting the speedy return to normal operations by eliminating safety concerns; re-establishing services, utilities, and the transportation system; clearing debris; and performing essential repairs.

6. Notification. The AC/S, G-3/5 will notify component and tenant commanders of weather advisories, conditions, and threats via NIPR, OMNI, and Applications over Hybrid Optical Fibre Coax (AtHoc) notification tool.

7. Tropical Cyclone Conditions of Readiness Tasks. In addition to the tasks contained in Chapters 1, 4, 5, and 6, the following specific responsibilities/tasks will be accomplished during the specified TCC. All Base staff, Area Commanders, and tenant commands/units are to be cognizant of all responsibilities/tasks contained in this paragraph. The following task lists are subject to modification as a result of event-specific mission

2 6 NOV 2014

analysis performed by the Commander, CMT and/or the AC/S, G-3/5. A generalized task matrix is provided in Figure 3-2, and detailed task lists are provided in subsections (a) through (i) in this paragraph.

TCC	V	IV (72)	III (48)	II (24)	I (12)	IC (6)	IE	IR
BASE	Normal Ops	Normal Ops/Prepare for TCC III	Prepare for TCC III	Advise to secure field training prior to setting of TCC I	Field training secured	Minimize vehicle movements to mission essential/Emergency response/Returning residents		Phased recovery - Essential Ops only
EOC	Normal Ops	Monitor/AIS update	Partial activation (G-1, G-3/5, G-4) AIS update	Full evacuation/24 hours Ops/AIS update	AIS update	Seal EOC Watches/AIS update	AIS update	Phased stand down/ Transition to Ops
DCRC	Normal Ops		Prepare for TCC III	Evacuate/RRT SNCOICs to report to DCRC				Ops transition from EOC/Phased stand down
SHELTERS	Pre-stage & reconstitute blocks	Shelter Teams prepare to deploy	Shelter teams report/Prepare to receive equipment	Receive equipment from staging area/prepare to receive occupants, receive MREs	Open to receive occupants			Selective Closure
EVACUATIONS	Normal Ops		Notify high risks areas (Onslow Beach, etc.) of impending evacuation	Assess conditions for impending evacuation	Evacuate high risk areas	Block access to Onslow Beach		
PERSONNEL	Normal Ops				Release non-essential			
LIBERTY	Normal Ops				Restrict to Base liberty	Secure - Restrict to place of duty/Barracks/Quarters		Review status
FACILITIES	Normal Ops			Prepare EOC w/schedule for closure/suspension of facilities/services	Selective closures per schedule	Close all remaining except for Emergency Messhalls	Close all	Essential Ops only - Selective Open
STAGING AREA GOETTGE FIELD HOUSE		Prepare to activate	Activated & Manned by G-4 & II MEF	Deploy all assets to final location	Stand down			Reactive to receive & redeploy assets to parent command
TACTICAL VEHICLES & EQUIPMENT	Normal Ops	Prepare to deploy	Deploy to Goettge Field House	Deploy to final location				On order of EOC, redeploy to Goettge Field House
TACTICAL COMMUNICATIONS	Normal Ops	Prepare to deploy	Deploy to Goettge Field House	Deploy to final location & conduct radio checks	Conduct radio checks then stand down until needed			On order of EOC, redeploy to Goettge Field House
POWER	Normal Ops	Stage, fuel & test generators/ Prepare to deploy	Deploy to Goettge Field House	Deploy to final location	Prepare for power shutdown			Phased recovery/On order of EOC, redeploy to Goettge Field House

Figure 3-2.--Tropical Cyclone Condition Task Manager for Tenant Units [Non-Tenant Units must make specific arrangements during visit planning].

a. Tropical Cyclone Condition V (TCC V, No Specific Threat) Tasks

AC/S, G-1
1. <input type="checkbox"/> Identify an appropriate pool of personnel to serve as the AC/S, G-1 Watch Officers in the MCIEAST-MCB CAMLEJ EOC. Ensure that selected personnel are briefed concerning their responsibilities, trained in the use of the WebEOC application, and available for short-notice activation throughout the Atlantic Hurricane Season.
2. <input type="checkbox"/> Identify an appropriate pool of personnel to serve as roster builders at the Staging Area. Roster builders will be Tactical Control (TACON) to the Staging Area Manager and be responsible for the development and maintenance of an accurate roster that identifies the personnel assigned to the Destructive Weather Task Force (DUTF) from II MEF at the Staging Area. Ensure that selected personnel are briefed concerning their responsibilities, trained in the use of the WebEOC application, and available for short-notice activation throughout the Atlantic Hurricane Season. Roster builders will track personnel movements from the staging area throughout the weather event.
3. <input type="checkbox"/> Review all checklist tasks associated with TCC IV.
AC/S, G-3/5
4. <input type="checkbox"/> Set and disseminate the setting of TCC V via official message traffic on 1 Jun to correspond with the start of the Atlantic Hurricane Season.
5. <input type="checkbox"/> Identify an appropriate pool of personnel, including SWOs, to serve as a core staff for the MCIEAST-MCB CAMLEJ EOC. Ensure that selected personnel are briefed concerning their responsibilities, trained in the use of the WebEOC application, and are available for short-notice activation throughout the Atlantic Hurricane Season.
6. <input type="checkbox"/> Plan, execute, and evaluate an annual exercise and periodic drills required to ensure proper coordination between staff sections and units tasked with the execution of this Order.
7. <input type="checkbox"/> Update (910) 451-1717 information line with a general seasonal update.
8. <input type="checkbox"/> Coordinate with the AC/S, G-3/5 and the AC/S, MCCS for the staging of traffic control barriers at the staging area (Goettge Field House).
9. <input type="checkbox"/> Monitor weather forecasts and recommend the setting of TCC IV.
10. <input type="checkbox"/> Review all checklist tasks associated with TCC IV.
AC/S, G-4
11. <input type="checkbox"/> Identify personnel to serve as the AC/S, G-4 Watch Officers in the MCIEAST-MCB CAMLEJ EOC. Ensure that selected personnel are briefed concerning their responsibilities, trained in the use of the WebEOC application, and are available for short-notice activation throughout the Atlantic Hurricane Season.
12. <input type="checkbox"/> Identify a site manager to serve as a core staff for the MCB CAMLEJ Staging Area (Field House). Ensure that selected personnel are briefed concerning their responsibilities, trained in the use of the WebEOC application, and are available for short-notice activation throughout the Atlantic Hurricane Season.
13. <input type="checkbox"/> Review all checklist tasks associated with TCC IV.
AC/S, G-6
14. <input type="checkbox"/> Identify an appropriate pool of personnel to serve as the AC/S, G-6 Watch Officers in the MCIEAST-MCB CAMLEJ EOC. Ensure that selected personnel are briefed concerning their responsibilities, trained in the use of the WebEOC application, and are available for short-notice activation throughout the Atlantic Hurricane Season.
15. <input type="checkbox"/> Review all checklist tasks associated with TCC IV.

AC/S, G-F
16. <input type="checkbox"/> Identify an appropriate pool of personnel to serve as the AC/S, G-F Watch Officers in the MCIEAST-MCB CAMLEJ EOC. Ensure that selected personnel are briefed concerning their responsibilities, trained in the use of the WebEOC application, and are available for short-notice activation throughout the Atlantic Hurricane Season.
17. <input type="checkbox"/> Identify an appropriate pool of personnel, including a site manager, to serve as a staff for the Disaster Control Recovery Center (DCRC). Ensure that selected personnel are briefed concerning their responsibilities, trained in the use of the WebEOC application, and are available for short-notice activation throughout the Atlantic Hurricane Season.
18. <input type="checkbox"/> Review all checklist tasks associated with TCC IV.
AC/S, MCCS
19. <input type="checkbox"/> Identify an appropriate pool of personnel to serve as the MCCS Watch Officers in the MCIEAST-MCB CAMLEJ EOC. Ensure that selected personnel are briefed concerning their responsibilities, trained in the use of the WebEOC application, and are available for short-notice activation throughout the Atlantic Hurricane Season.
20. <input type="checkbox"/> Ensure Staging Area facilities (Goettge Memorial Field House/adjacent parking) are prepared for short-notice (24-hour) activation.
21. <input type="checkbox"/> Update (910) 451-1717 information line.
22. <input type="checkbox"/> Review all checklist tasks associated with TCC IV.
AC/S, SES
23. <input type="checkbox"/> Identify an appropriate pool of personnel to serve as the SES, PMO, and Fire and Emergency Services Division (FESD) Watch Officers in the MCIEAST-MCB CAMLEJ EOC. Ensure that selected personnel are briefed concerning their responsibilities, trained in the use of the WebEOC application, and are available for short-notice activation throughout the Atlantic Hurricane Season.
24. <input type="checkbox"/> Review all checklist tasks associated with TCC IV.
Chaplain
25. <input type="checkbox"/> Identify an appropriate pool of personnel to serve as the Chaplain Office representatives to the MCIEAST-MCB CAMLEJ EOC. Ensure that selected personnel are briefed concerning their responsibilities, trained in the use of the WebEOC application, and are available for short-notice activation throughout the Atlantic Hurricane Season.
26. <input type="checkbox"/> Review all checklist tasks associated with TCC IV.
AC/S, G-8
27. <input type="checkbox"/> Identify an appropriate pool of personnel to serve as the AC/S, G-8 representatives to the MCIEAST-MCB CAMLEJ EOC. Ensure that selected personnel are briefed concerning their responsibilities, trained in the use of the WebEOC application, and are available for short-notice activation throughout the Atlantic Hurricane Season.
28. <input type="checkbox"/> Be prepared to set up a dedicated Line of Accounting (LOA) for a Government Commercial Purchase Card (GCPC) for the AC/S, G-3/5 to use in the event that the EOC is activated for the storm.

29. <input type="checkbox"/> Review all checklist tasks associated with TCC IV.
Regional Contracting Office (RCO)
30. <input type="checkbox"/> Identify an appropriate pool of personnel to serve as the RCO Representatives to the MCIEAST-MCB CAMLEJ EOC. Ensure that selected personnel are briefed concerning their responsibilities, trained in the use of the WebEOC application, and are available for short-notice activation throughout the Atlantic Hurricane Season.
31. <input type="checkbox"/> Provide an updated point of contact list to the AC/S, G-3/5 and AC/S, G-4 in order to support commercial sector procurements in the event of destructive weather.
32. <input type="checkbox"/> Be prepared to issue a GCPC for the AC/S, G-3/5 to use in the event that the EOC is activated for the storm.
33. <input type="checkbox"/> Conduct liaison with local and regional vendors for commercial sector contracts required by AC/S, G-3/5 and/or AC/S, G-4.
34. <input type="checkbox"/> Review all checklist tasks associated with TCC IV.
Director, PAO
35. <input type="checkbox"/> Identify an appropriate pool of personnel to serve as the PAO Watch Officers in the MCIEAST-MCB CAMLEJ EOC. Ensure that selected personnel are briefed concerning their responsibilities, trained in the use of the WebEOC application, and are available for short-notice activation throughout the Atlantic Hurricane Season.
36. <input type="checkbox"/> Review all checklist tasks associated with TCC IV.
Director of Safety (DOS)
37. <input type="checkbox"/> Identify an appropriate pool of personnel to serve as the DOS representative to the MCIEAST-MCB CAMLEJ EOC. Ensure that selected personnel are briefed concerning their responsibilities, trained in the use of the WebEOC application, and are available for short-notice activation throughout the Atlantic Hurricane Season.
38. <input type="checkbox"/> Assist Area Commanders with the conduct of periodic, detailed inspections and the identification and recommended mitigation of hazards and potential hazards in the event of high winds, heavy rain, and/or flooding.
39. <input type="checkbox"/> Review all checklist tasks associated with TCC IV.
Staff Judge Advocate (SJA)
40. <input type="checkbox"/> Identify an appropriate pool of personnel to serve as the SJA representatives to the MCIEAST-MCB CAMLEJ EOC. Ensure that selected personnel are briefed concerning their responsibilities, trained in the use of the WebEOC application, and are available for short-notice activation throughout the Atlantic Hurricane Season.
41. <input type="checkbox"/> Review all checklist tasks associated with TCC IV.
Commanding Officer (CO), Headquarters and Support Battalion (H&S BN)
42. <input type="checkbox"/> Organize, staff, and equip an Area Command Post to serve during serious weather events. Identify an appropriate pool of personnel to serve in that command post, and ensure that selected personnel are briefed concerning this Order, area-specific plans for destructive weather, and trained in the use of the WebEOC application. Hold this command post and personnel ready for short-notice activation throughout the Atlantic Hurricane Season.
43. <input type="checkbox"/> Maintain and drill an appropriate pool of personnel to serve as crews for the Base's three identified shelters. Review and practice shelter

<p>procedures and inventory, maintain, and replace equipment and supplies, as required. Ensure that selected personnel are briefed concerning their responsibilities, trained in the use of assigned equipment, and the WebEOC application. Hold shelters and personnel ready for short-notice activation throughout the Atlantic Hurricane Season.</p>
<p>44. <input type="checkbox"/> Identify an appropriate pool of personnel to serve as troop handlers at the Staging Area. Troop handlers will be under the direction of the Staging Area Manager and responsible for the general accountability, life support, and security of DMTF personnel and equipment while they are at the Staging Area.</p>
<p>45. <input type="checkbox"/> Conduct periodic, detailed inspections of the Central Area and identify and address hazards and potential hazards in the event of high winds, heavy rain, and/or flooding.</p>
<p>46. <input type="checkbox"/> Review all checklist tasks associated with TCC IV.</p>
<p style="text-align: center;">Area Commanders</p>
<p>47. <input type="checkbox"/> Organize, staff, and equip an Area Command Post to serve during serious weather events. Identify an appropriate pool of personnel to serve in that command post and ensure that selected personnel are briefed concerning this Order, area-specific plans for destructive weather, and trained in the use of the WebEOC application. Hold this command post and personnel ready for short-notice activation throughout the Atlantic Hurricane Season.</p>
<p>48. <input type="checkbox"/> Conduct periodic, detailed inspections of your area and identify and address hazards and potential hazards in the event of high winds, heavy rain, and/or flooding.</p>
<p>49. <input type="checkbox"/> Review all checklist tasks associated with TCC IV.</p>
<p style="text-align: center;">CG, II MEF</p>
<p>50. <input type="checkbox"/> Request that you identify an appropriate pool of personnel to serve as the II MEF Liaison Officers (LNOs) in the MCIEAST-MCB CAMLEJ EOC. Ensure that selected personnel are briefed concerning their responsibilities, trained in the use of the WebEOC application, and are available for short-notice activation throughout the Atlantic Hurricane Season.</p>
<p>51. <input type="checkbox"/> Request that you review all checklist tasks associated with TCC IV.</p>
<p style="text-align: center;">CO, Naval Hospital (NAVHOSP)</p>
<p>52. <input type="checkbox"/> Identify an appropriate pool of personnel to serve as the NAVHOSP LNOs in the MCIEAST-MCB CAMLEJ EOC. Ensure that selected personnel are briefed concerning their responsibilities, trained in the use of the WebEOC application, and are available for short-notice activation throughout the Atlantic Hurricane Season.</p>
<p>53. <input type="checkbox"/> Organize, staff, and equip an Area Command Post to serve during serious weather events. Identify an appropriate pool of personnel to serve in that command post and ensure that selected personnel are briefed concerning this Order, area-specific plans for destructive weather, and trained in the use of the WebEOC application. Hold this command post and personnel ready for short-notice activation throughout the Atlantic Hurricane Season.</p>
<p>54. <input type="checkbox"/> Conduct periodic, detailed inspections of the Hospital Area and identify and address hazards and potential hazards in the event of high winds, heavy rain, and/or flooding.</p>
<p>55. <input type="checkbox"/> Review all checklist tasks associated with TCC IV.</p>

26 NOV 2014

b. Tropical Cyclone Condition IV (TCC IV, 72 Hours) Tasks

CG, Deputy Commander, or COS, MCIEAST-MCB CAMLEJ
1. <input type="checkbox"/> Authorize the setting of TCC IV.
AC/S, G-1
2. <input type="checkbox"/> Prepare to provide a team of Roster Builders to assist the Staging Area officer-in-charge (OIC) with personnel accountability of the DWTF. Arrange transportation of personnel to the staging site during the event.
3. <input type="checkbox"/> Provide the EOC Operations Chief with the names and contact information of three watch standers to serve in the EOC in the event of EOC activation in connection with the subject cyclone.
4. <input type="checkbox"/> Populate interactive checklists for TCC IV located under the "Tools" section on the control panel in the WebEOC application.
5. <input type="checkbox"/> Review all checklist tasks associated with TCC III contained in this Order.
AC/S, G-3/5
6. <input type="checkbox"/> Disseminate the setting of TCC IV via official message traffic on 1 June to correspond with the start of the Atlantic Hurricane Season.
7. <input type="checkbox"/> Monitor weather forecasts and recommend the setting of TCC III.
8. <input type="checkbox"/> Convene and chair an Operational Planning Team (OPT) (typically the MCIEAST-MCB CAMLEJ CMT), with representatives from the AC/S, G-4, AC/S, G-F, AC/S, G-6, and II MEF to conduct event specific mission analysis and to validate all vehicle, equipment, and personnel requirements/resources contained in this Order.
9. <input type="checkbox"/> Prepare to activate the MCIEAST-MCB CAMLEJ EOC.
10. <input type="checkbox"/> Update (910) 451-1717 information line.
11. <input type="checkbox"/> Monitor the accomplishment of checklist tasks by area commands and by Base Staff sections*. *Interactive checklists are located under the "Tools" section on the control panel in the WebEOC application.
12. <input type="checkbox"/> Review all checklist tasks associated with TCC III contained in this Order.
13. <input type="checkbox"/> Alert the Navy Boat Crew to be prepared to support SES.
14. <input type="checkbox"/> Provide eight water barriers to the Staging Area OIC during TCC IV.
AC/S, G-4
15. <input type="checkbox"/> Prepare to activate the staging area (Goettge Field House).
16. <input type="checkbox"/> Provide OPT representative(s) to validate all vehicle, equipment, and personnel requirements/resources contained in this Order.
17. <input type="checkbox"/> Provide a validated list of emergency mess halls to the MCIEAST-MCB CAMLEJ EOC.
18. <input type="checkbox"/> Populate interactive checklists for TCC IV located under the "Tools" section on the control panel in the WebEOC application.
19. <input type="checkbox"/> Review all checklist tasks associated with TCC III contained in this Order.
20. <input type="checkbox"/> Conduct refuel of all permanent back-up generators associated with critical infrastructure.
AC/S, G-6
21. <input type="checkbox"/> Populate interactive checklists for TCC IV located under the "Tools" section on the control panel in the WebEOC application.
22. <input type="checkbox"/> Review all checklist tasks associated with TCC III contained in this Order.
AC/S, G-F
23. <input type="checkbox"/> Prepare to activate the DCRC.

24. <input type="checkbox"/> Prepare to receive and/or deploy all vehicles, equipment, and personnel in conjunction with the setting of subsequent TCCs.
25. <input type="checkbox"/> Provide OPT representative(s) to validate all vehicle, equipment, and personnel requirements/resources contained in this Order.
26. <input type="checkbox"/> Ensure all mess hall liquid propane tanks are filled to capacity.
27. <input type="checkbox"/> Populate interactive checklists for TCC IV located under the "Tools" section on the control panel in the WebEOC application.
28. <input type="checkbox"/> Review all checklist tasks associated with TCC III contained in this Order.
AC/S, MCCS
29. <input type="checkbox"/> Populate interactive checklists for TCC IV located under the "Tools" section on the control panel in the WebEOC application.
30. <input type="checkbox"/> Review all checklist tasks associated with TCC III contained in this Order.
AC/S, SES
31. <input type="checkbox"/> Provide the EOC Operations Chief with the names and contact information for three watch standers each for SES, PMO, and FESD to serve in the EOC in the event of EOC activation in connection with the subject cyclone.
32. <input type="checkbox"/> Populate interactive checklists for TCC IV located under the "Tools" section on the control panel in the WebEOC application.
33. <input type="checkbox"/> Review all checklist tasks associated with TCC III contained in this Order.
Chaplain
34. <input type="checkbox"/> Provide the EOC Operations Chief with the name and contact information of a duty chaplain who will be available to provide/coordinate chaplain services during the subject cyclone.
35. <input type="checkbox"/> Review all checklist tasks associated with TCC III contained in this Order.
AC/S, G-8
36. <input type="checkbox"/> Provide the EOC Operations Chief with the name and contact information of a duty Comptroller who will be available to provide/coordinate Comptroller services during the subject cyclone.
37. <input type="checkbox"/> Review all checklist tasks associated with TCC III contained in this Order.
RCO
38. <input type="checkbox"/> Provide the EOC Operations Chief with the name and contact information of a duty contractor who will be available to provide/coordinate contracting services during the subject cyclone.
39. <input type="checkbox"/> Review all checklist tasks associated with TCC III contained in this Order.
Director, PAO
40. <input type="checkbox"/> Coordinate with the AC/S, G-3/5 for the preparation and release of destructive weather information.
41. <input type="checkbox"/> Provide the EOC Operations Chief with the names and contact information of three PAO watch standers to serve in the EOC in the event of EOC activation in connection with the subject cyclone.
42. <input type="checkbox"/> Populate interactive checklists for TCC IV located under the "Tools" section on the control panel in the WebEOC application.
43. <input type="checkbox"/> Review all checklist tasks associated with TCC III contained in this Order.

DOS
44. <input type="checkbox"/> Provide the EOC Operations Chief with the name and contact information of a duty safety officer who will be available to provide/coordinate safety services during the subject cyclone.
45. <input type="checkbox"/> Review all checklist tasks associated with TCC III contained in this Order.
CO, H&S BN
46. <input type="checkbox"/> Tour area of responsibility to ensure proper state of police, repair and posture for approaching cyclone.
47. <input type="checkbox"/> Validate rations requirements and report them to MCIEAST-MCB CAMLEJ Installation Emergency Manager (IEM) (who will source shelter meals from American Red Cross (ARC)).
48. <input type="checkbox"/> Prepare to activate area emergency command post.
49. <input type="checkbox"/> Populate interactive checklists for TCC IV located under the "Tools" section on the control panel in the WebEOC application.
50. <input type="checkbox"/> Review all checklist tasks associated with TCC III contained in this Order.
Area Commanders
51. <input type="checkbox"/> Tour area of responsibility to ensure proper state of police, repair, and posture for approaching cyclone.
52. <input type="checkbox"/> Validate rations requirements.
53. <input type="checkbox"/> Prepare to activate area emergency command post.
54. <input type="checkbox"/> Populate interactive checklists for TCC IV located under the "Tools" section on the control panel in the WebEOC application.
55. <input type="checkbox"/> Review all checklist tasks associated with TCC III contained in this Order.
SJA
56. <input type="checkbox"/> Provide the EOC Operations Chief with the name and contact information of a duty SJA who will be available to provide/coordinate JA services during the subject cyclone.
CG, II MEF
57. <input type="checkbox"/> Request OPT representative(s) (to include major subordinate commands, if desired) to validate all vehicle, equipment, and personnel requirements/resources contained in this Order.
58. <input type="checkbox"/> Request preparation to activate the personnel, vehicles, and equipment identified as component to the DWTF contained in this Order.
59. <input type="checkbox"/> Request to provide the EOC Operations Chief with the names and contact information of three LNOs to serve in the EOC in the event of EOC activation in connection with the subject cyclone.
60. <input type="checkbox"/> Receive a portable generator at Mess Hall 411.
61. <input type="checkbox"/> Request to provide identified shortages of on-hand rations to MCIEAST-MCB CAMLEJ (AC/S, G-4 Food Services). The AC/S, G-4 recommends II MEF provide its own rations.
62. <input type="checkbox"/> Request a review of all checklist tasks associated with TCC III contained in this Order.
CO, NAVHOSP
63. <input type="checkbox"/> Provide the EOC Operations Chief with the names and contact information of three NAVHOSP LNOs to serve in the EOC in the event of EOC activation in connection with the subject cyclone.
64. <input type="checkbox"/> Tour area of responsibility to ensure proper state of police, repair, and posture for approaching cyclone.
65. <input type="checkbox"/> Validate rations requirements.
66. <input type="checkbox"/> Prepare to activate area emergency command post.

26 NOV 2014

- | |
|---|
| 67. <input type="checkbox"/> Populate interactive checklists for TCC IV located under the "Tools" section on the control panel in the WebEOC application. |
| 68. <input type="checkbox"/> Review all checklist tasks associated with TCC III contained in this Order. |

c. Tropical Cyclone Condition III (TCC III, 48 Hours) Tasks

CG, Deputy Commander, or COS, MCIEAST-MCB CAMLEJ
1. <input type="checkbox"/> Authorize the setting of TCC III.
AC/S, G-1
2. <input type="checkbox"/> Provide a Roster Building Team to the Staging Area. The team will be TACON to the Staging Area Manager while the Staging Area is active. The Roster Building Team will populate the DWTF Status Board in the WebEOC application with the Personally Identifiable Information and contact information necessary to support operations. Identify any personnel exceptions or issues to the Staging Area Manager and MCIEAST-MCB CAMLEJ EOC as appropriate.
3. <input type="checkbox"/> Provide a watch officer to serve in the MCIEAST-MCB CAMLEJ EOC to assist the SWO with personnel matters. TCC III watch rotation should expect to work a 24-hour sleeping post and be relieved shortly after TCC II is set.
4. <input type="checkbox"/> Populate interactive checklists for TCC III located under the "Tools" section on the control panel in the WebEOC application.
5. <input type="checkbox"/> Review all checklist tasks associated with TCC II contained in this Order.
AC/S, G-3/5
6. <input type="checkbox"/> Disseminate the setting of TCC III via official message traffic.
7. <input type="checkbox"/> Update (910) 451-1717 information line.
8. <input type="checkbox"/> Partially activate the MCIEAST-MCB CAMLEJ EOC. Provide a SWO, Watch Chief, and Facilities Manager. Prepare for the full activation once TCC II is set. TCC III watch rotation should expect to work a 24-hour sleeping post and be relieved shortly after TCC II is set.
9. <input type="checkbox"/> Monitor, facilitate, and coordinate the activation of the DWTF. Assist the Staging Area OIC, as required, to promote smooth check-in of the DWTF at the staging area.
10. <input type="checkbox"/> Assume responsibility for the DWTF once all units have reported to, and are assessed by, the Staging Area Manager as ready for assignment. Document assumption of responsibility and any exceptions in a WebEOC entry.
11. <input type="checkbox"/> Monitor the accomplishment of checklist tasks by area commands and by Base Staff sections*. *Interactive checklists are located under the "Tools" section on the control panel in the WebEOC application.
12. <input type="checkbox"/> Monitor weather forecasts and recommend the setting of TCC II.
13. <input type="checkbox"/> Review all checklist tasks associated with TCC II contained in this Order.
AC/S, G-4
14. <input type="checkbox"/> Activate the staging area. Report the arrival and assets status of all vehicles and equipment augmentations provided by II MEF to the MCIEAST-MCB CAMLEJ EOC using the DWTF Status Board in the WebEOC application. Maintain 24-hour presence from TCC III until secured by the MCIEAST-MCB CAMLEJ EOC.
15. <input type="checkbox"/> Provide a watch officer to serve in the MCIEAST-MCB CAMLEJ EOC to assist the SWO with logistics matters. TCC III watch rotation should expect to work a 24-hour sleeping post and be relieved shortly after TCC II is set.

16. <input type="checkbox"/> Provide shuttle service between the staging area and the designated Mess Hall for staging area staff and augmented personnel.
17. <input type="checkbox"/> Coordinate with Marine Corps Air Station (MCAS), New River for the pick-up of Meals-Ready-to-Eat (MRE) block in accordance with the MRE distribution plan.
18. <input type="checkbox"/> Set-up traffic control barriers (staged within Goettge Field House) for the receipt and deployment of vehicles, equipment, and personnel at the staging area. Request, via EOC, for the FESD to provide water to fill traffic control barriers.
19. <input type="checkbox"/> Populate interactive checklists for TCC III located under "Tools" section on the control panel in the WebEOC application.
20. <input type="checkbox"/> Review all checklist tasks associated with TCC II contained in this Order.
AC/S, G-6
21. <input type="checkbox"/> Inspect radio assets component to the DWTF while those assets are in the Staging Area. View all radio equipment, ensuring that it is in good operating condition. Ensure radio operators are briefed on frequencies, tasks, and procedures (POC: Staging Area Manager).
22. <input type="checkbox"/> Conduct Tactical Radio check with the II MEF EOC.
23. <input type="checkbox"/> Populate interactive checklists for TCC III located under the "Tools" section on the control panel in the WebEOC application.
24. <input type="checkbox"/> Review all checklist tasks associated with TCC II contained in this Order.
AC/S, G-F
25. <input type="checkbox"/> Coordinate dumpster and grease pick-up from mess halls.
26. <input type="checkbox"/> Receive portable generator operators.
27. <input type="checkbox"/> Determine requirement/execute for Construction Capabilities support.
28. <input type="checkbox"/> Activate the Response/Recovery Teams (RRTs) being sourced by the maintenance contractor.
29. <input type="checkbox"/> Prepare to activate the DCRC.
30. <input type="checkbox"/> Populate interactive checklists for TCC III located under the "Tools" section on the control panel in the WebEOC application.
31. <input type="checkbox"/> Review all checklist tasks associated with TCC II contained in this Order.
AC/S, MCCS
32. <input type="checkbox"/> Populate interactive checklists for TCC III located under the "Tools" section on the control panel in the WebEOC application.
33. <input type="checkbox"/> Review all checklist tasks associated with TCC II contained in this Order.
AC/S, SES
34. <input type="checkbox"/> Receive portable generators and operators at assigned final destinations.
35. <input type="checkbox"/> Prepare to support the evacuation of designated areas that may be directed by the MCIEAST-MCB CAMLEJ EOC.
36. <input type="checkbox"/> Provide and deliver water to fill the traffic control barriers at the staging area. Coordinate with the OIC/Chief of the staging area (Goettge Field House).
37. <input type="checkbox"/> Populate interactive checklists for TCC III located under the "Tools" section on the control panel in the WebEOC application.
38. <input type="checkbox"/> Review all checklist tasks associated with TCC II contained in this Order.

Chaplain
39. <input type="checkbox"/> Review all checklist tasks associated with TCC II contained in this Order.
AC/S, G-8
40. <input type="checkbox"/> Review all checklist tasks associated with TCC II contained in this Order.
RCO
41. <input type="checkbox"/> Review all checklist tasks associated with TCC II contained in this Order.
Director, PAO
42. <input type="checkbox"/> Coordinate with AC/S, G-3/5 for the preparation and release of destructive weather information.
43. <input type="checkbox"/> Broadcast general shelter information.
44. <input type="checkbox"/> Review all checklist tasks associated with TCC II contained in this Order.
DOS
45. <input type="checkbox"/> Review all checklist tasks associated with TCC II contained in this Order.
SJA
46. <input type="checkbox"/> Review all checklist tasks associated with TCC II contained in this Order.
CO, H&S BN
47. <input type="checkbox"/> Prepare to activate designated shelters. Ensure shelter teams are in place prior to the setting of TCC II to receive vehicles, equipment, and personnel augmentations. Report accountability and status of shelter teams to the HQSPTBN S-3. Test communications connectivity; identify issues to H&S BN S-3.
48. <input type="checkbox"/> Populate interactive checklists for TCC III located under the "Tools" section on the control panel in the WebEOC application.
49. <input type="checkbox"/> Review all checklist tasks associated with TCC II contained in this Order.
50. <input type="checkbox"/> Provide a staff noncommissioned officer (SNCO) troop handler to the Staging Area. This SNCO will work under the direction of the Staging Area Manager while the Staging Area is active and is responsible for the accountability, life support, and security of the DWTF personnel and equipment at the Staging Area. Duties include: maintain accountability of personnel assigned to the DWTF while those personnel remain at the Staging Area; pass and enforce facility use regulations as may be given by the Staging Area Manager; maintain proper police of areas used by DWTF members; organize and supervise an unarmed guard of the staging area during non-working hours, ensure vehicle crews report to their vehicles when called by Staging Area Manager; and organize and supervise the DWTF Feed Plan as directed by the Staging Area Manager.
Area Commanders
51. <input type="checkbox"/> Populate interactive checklists for TCC III located under the "Tools" section on the control panel in the WebEOC application.
52. <input type="checkbox"/> Review all checklist tasks associated with TCC II contained in this Order.
CG, II MEF
53. <input type="checkbox"/> Request deployment of all vehicles, equipment, and personnel as identified in this Order in conjunction with the setting of TCC III. Dispatch assets with seven-day trip tickets. Responsibility for vehicles, equipment, and personnel passes to the MCIEAST-MCB CAMLEJ EOC upon accountability/acceptance at the staging area (Goettge Field House).

Accountability reports will be provided to the II MEF DWOC at each subsequent TCC. This responsibility (by the MCIEAST-MCB CAMLEJ EOC) will terminate when the MCIEAST-MCB CAMLEJ EOC directs the demobilization of the DWTF and its components are returned to II MEF control.
54. <input type="checkbox"/> Request a representative(s) to work with the Staging Area Manager to facilitate the reception and accountability of II MEF-provided elements of the DWTF.
55. <input type="checkbox"/> Request review of all checklist tasks associated with TCC II contained in this Order.
CO, NAVHOSP
56. <input type="checkbox"/> Prepare to deploy all equipment and personnel (Corpsmen and medical/infant items) to report to the Shelter Managers at assigned shelters.
57. <input type="checkbox"/> Prepare to open shelter facilities for pregnant women (3rd trimester) at the hospital.
58. <input type="checkbox"/> Populate interactive checklists for TCC III located under the "Tools" section on the control panel in the WebEOC application.
59. <input type="checkbox"/> Review all checklist tasks associated with TCC II contained in this Order.
CO, MCAS New River
60. <input type="checkbox"/> Receive portable generators and operators at assigned final destinations.
61. <input type="checkbox"/> Coordinate with the AC/S, G-4 for the pick-up of MRE block in accordance with the MRE distribution plan.
62. <input type="checkbox"/> Review all checklist tasks associated with TCC II contained in this Order.

d. Tropical Cyclone Condition II (TCC II, 24 Hours) Tasks

CG, Deputy Commander, or COS, MCIEAST-MCB CAMLEJ
1. <input type="checkbox"/> Authorize the setting of TCC II.
AC/S, G-1
2. <input type="checkbox"/> Provide a watch officer to serve in the MCIEAST-MCB CAMLEJ EOC to assist the SWO with personnel or G-1 matters. TCC II watch rotation should expect to work a 24-hour sleeping post and be relieved shortly after TCC I is set.
3. <input type="checkbox"/> Update (910) 451-1717 information line.
4. <input type="checkbox"/> Develop, coordinate, and provide to the MCIEAST-MCB CAMLEJ EOC a proposed schedule for the closure of CLDS and the suspension of non-essential services.
5. <input type="checkbox"/> Populate interactive checklists for TCC II located under the "Tools" section on the control panel in the WebEOC application.
6. <input type="checkbox"/> Review all checklist tasks associated with TCC I contained in this Order.
AC/S, G-3/5
7. <input type="checkbox"/> Disseminate the setting of TCC II via official message traffic.
8. <input type="checkbox"/> Update (910)451-1717 information line.
9. <input type="checkbox"/> Establish contact with the Onslow County EOC; consider exchanging LNOs.
10. <input type="checkbox"/> Monitor the accomplishment of checklist tasks by area commands and by Base Staff sections*. *Interactive checklists are located under the "Tools" section on the control panel in the WebEOC application.

11. <input type="checkbox"/> Review all checklist tasks associated with TCC I contained in this Order.
12. <input type="checkbox"/> Fully activate the MCIEAST-MCB CAMLEJ EOC. Provide a relief for the SWO, Assistant Watch Officer (AWO), Reports Manager, and EOC Facilities Manager in the MCIEAST-MCB CAMLEJ EOC. TCC II watch rotation should expect to work a 24-hour sleeping post and be relieved shortly after TCC I is set.
13. <input type="checkbox"/> Monitor weather forecasts and recommend the setting of TCC I.
14. <input type="checkbox"/> Coordinate with the AC/S, G-4 and II MEF for the sourcing of bus drivers to support bus shuttle service between the staging area and a designated Mess Hall for staging area staff and augmented personnel after contract employees have been secured (TCC I).
15. <input type="checkbox"/> Provide accountability report of II MEF-sourced vehicles, equipment, and personnel to the II MEF DWOC at each subsequent TCC.
AC/S, G-4
16. <input type="checkbox"/> On order from the MCIEAST-MCB CAMLEJ EOC, dispatch/deploy the DWTF, in accordance with instructions contained in this Order, or by written instruction provided via WebEOC by the AC/S, G-4 watch officer in the EOC. Update the location and status of all equipment assigned to the DWTF in the DWTF Status Board in the WebEOC application.
17. <input type="checkbox"/> Provide a relief for the AC/S, G-4 watch officer in the MCIEAST-MCB CAMLEJ EOC. TCC II watch rotation should expect to work a 24-hour sleeping post and be relieved shortly after TCC I is set.
18. <input type="checkbox"/> Develop, coordinate, and provide to the MCIEAST-MCB CAMLEJ EOC a proposed schedule for the closure of mess halls and the suspension of non-essential services.
19. <input type="checkbox"/> Deliver MRE blocks in accordance with the MRE distribution plan. Make MREs available for purchase by personnel not authorized to subsist at government expense.
20. <input type="checkbox"/> Populate interactive checklists for TCC II located under the "Tools" section on the control panel in the WebEOC application.
21. <input type="checkbox"/> Review all checklist tasks associated with TCC I contained in this Order.
AC/S, G-6
22. <input type="checkbox"/> Provide a watch officer and one data technician to serve in the MCIEAST-MCB CAMLEJ EOC to assist the SWO with communications matters. TCC II watch rotation should expect to work a 24-hour sleeping post and be relieved shortly after TCC I is set.
23. <input type="checkbox"/> Ensure tactical radio communications are established between MCIEAST-MCB CAMLEJ EOC, Staging Area, active shelters, Building 24, DCRC, PMO, Area Commands and the II MEF DWOC.
24. <input type="checkbox"/> Populate interactive checklists for TCC II located under the "Tools" section on the control panel in the WebEOC application.
25. <input type="checkbox"/> Review all checklist tasks associated with TCC I contained in this Order.
AC/S, G-F
26. <input type="checkbox"/> Provide a watch officer to serve in the MCIEAST-MCB CAMLEJ EOC to assist the SWO with facilities, public works, and environmental matters. TCC II watch rotation should expect to work a 24-hour sleeping post and be relieved shortly after TCC I is set.
27. <input type="checkbox"/> Activate the DCRC, provide a DCRC OIC, and support personnel, as required, to receive, organize, and manage facilities and utilities issues during the storm. Report facilities damage and utilities outages to the MCIEAST-MCB CAMLEJ EOC using the Electrical and Steam Distribution Status Boards in the WebEOC application. Direct and monitor emergency repairs and

2 6 NOV 2014

<p>damage mitigation once it is safe to do so. Maintain 24-hour presence from TCC II until secured by the EOC during TCC IR.</p>
<p>28. <input type="checkbox"/> Develop, coordinate, and provide to the MCIEAST-MCB CAMLEJ EOC a proposed schedule for the suspension of non-essential services.</p>
<p>29. <input type="checkbox"/> Populate interactive checklists for TCC II located under the "Tools" section on the control panel in the WebEOC application.</p>
<p>30. <input type="checkbox"/> Review all checklist tasks associated with TCC I contained in this Order.</p>
<p>AC/S, MCCS</p>
<p>31. <input type="checkbox"/> Provide a watch officer to serve in the MCIEAST-MCB CAMLEJ EOC to assist the SWO with MCCS matters. TCC II watch rotation should expect to work a 24-hour sleeping post and be relieved shortly after TCC I is set.</p>
<p>32. <input type="checkbox"/> Update (910) 451-1717 information line.</p>
<p>33. <input type="checkbox"/> Develop, coordinate, and provide to the MCIEAST-MCB CAMLEJ EOC a proposed schedule for the closure of recreational, retail, and daycare facilities, and the suspension of non-essential services.</p>
<p>34. <input type="checkbox"/> Populate interactive checklists for TCC II located under the "Tools" section on the control panel in the WebEOC application.</p>
<p>35. <input type="checkbox"/> Review all checklist tasks associated with TCC I contained in this Order.</p>
<p>AC/S, SES</p>
<p>36. <input type="checkbox"/> Provide SES, PMO, and FESD watch officers to serve in the EOC during TCC II. TCC II watch rotation should expect to work a 24-hour sleeping post and be relieved shortly after TCC I is set.</p>
<p>37. <input type="checkbox"/> Initiate the evacuation of designated areas directed by the MCIEAST-MCB CAMLEJ EOC.</p>
<p>38. <input type="checkbox"/> Populate interactive checklists for TCC II located under the "Tools" section on the control panel in the WebEOC application.</p>
<p>39. <input type="checkbox"/> Review all checklist tasks associated with TCC I contained in this Order.</p>
<p>Chaplain</p>
<p>40. <input type="checkbox"/> Ensure that the duty Chaplain attends the EOC stand-up brief, face-to-face with the EOC SWO, and confirms emergency contact information so that he/she can be reached during/immediately after the storm.</p>
<p>41. <input type="checkbox"/> Review all checklist tasks associated with TCC I contained in this Order.</p>
<p>AC/S, G-8</p>
<p>42. <input type="checkbox"/> Issue a GCPC with a dedicated LOA to the AC/S, G-3/5 for use for the duration of the EOC activation.</p>
<p>43. <input type="checkbox"/> Ensure that the duty Comptroller attends the EOC stand-up brief, face-to-face with the EOC SWO, and confirms emergency contact information so that he/she can be reached during/immediately after the storm.</p>
<p>44. <input type="checkbox"/> Review all checklist tasks associated with TCC I contained in this Order.</p>
<p>RCO</p>
<p>45. <input type="checkbox"/> Ensure that the duty Contractor attends the EOC stand-up brief, face-to-face with the EOC SWO, and confirms emergency contact information so that he/she can be reached during/immediately after the storm.</p>
<p>46. <input type="checkbox"/> Review all checklist tasks associated with TCC I contained in this Order.</p>

Director, PAO
47. <input type="checkbox"/> Provide a watch officer to serve in the MCIEAST-MCB CAMLEJ EOC to assist the SWO with public information matters. TCC II watch rotation should expect to work a 24-hour sleeping post and be relieved shortly after TCC I is set.
48. <input type="checkbox"/> Establish contact with the Public Information Officer in the Onslow County EOC.
49. <input type="checkbox"/> Coordinate with the AC/S, G-3/5 for the preparation and release of destructive weather information.
50. <input type="checkbox"/> Broadcast specific shelter information.
51. <input type="checkbox"/> Review all checklist tasks associated with TCC I contained in this Order.
DOS
52. <input type="checkbox"/> Ensure that the duty Safety Officer attends the EOC stand-up brief, face-to-face with the EOC SWO, and confirms emergency contact information so that they can be reached during/immediately after the storm.
53. <input type="checkbox"/> Review all checklist tasks associated with TCC I contained in this Order.
SJA
54. <input type="checkbox"/> Ensure that the duty SJA attends the EOC stand-up brief, face-to-face with the EOC SWO, and confirms emergency contact information so that they can be reached during/immediately after the storm.
55. <input type="checkbox"/> Review all checklist tasks associated with TCC I contained in this Order.
CO, H&S Bn
56. <input type="checkbox"/> Ensure shelter teams (to include corpsmen and medical/infant teams) have received vehicles, equipment, MREs, and personnel augmentations, and are prepared to open. Report readiness and status of shelters to the MCIEAST-MCB CAMLEJ EOC.
57. <input type="checkbox"/> Populate interactive checklists for TCC II located under the "Tools" section on the control panel in the WebEOC application.
58. <input type="checkbox"/> Review all checklist tasks associated with TCC I contained in this Order.
Area Commanders
59. <input type="checkbox"/> Populate interactive checklists for TCC II located under the "Tools" section on the control panel in the WebEOC application.
60. <input type="checkbox"/> Review all checklist tasks associated with TCC I contained in this Order.
CG, II MEF
61. <input type="checkbox"/> Request that you provide an LNO to serve in the MCIEAST-MCB CAMLEJ EOC to assist the SWO with II MEF matters. TCC II watch rotation should expect to work a 24-hour sleeping post and be relieved shortly after TCC I is set.
62. <input type="checkbox"/> Request that you ensure <u>SNCOICs (ONLY)</u> of RRTs report (<u>in person</u>) to the DCRC (Building 1005).
63. <input type="checkbox"/> Request that you prepare to source one bus driver to support bus shuttle service between the staging area and Mess Hall 9 for staging area staff and augmented personnel after contract employees have been secured (TCC I).
64. <input type="checkbox"/> Request that you review all checklist tasks associated with TCC I contained in this Order.
CO, NAVHOSP
65. <input type="checkbox"/> Provide an LNO to serve in the MCIEAST-MCB CAMLEJ EOC to assist the SWO with medical service matters. TCC II watch rotation should expect to work a 24-hour sleeping post and be relieved shortly after TCC I is set.

2 6 NOV 2014

66. <input type="checkbox"/> Deploy all equipment and personnel (Corpsmen and medical/infant teams) to Shelter Managers at assigned shelters.
67. <input type="checkbox"/> Prepare to open shelter facilities for pregnant women and special medical cases at the hospital.
68. <input type="checkbox"/> Develop, coordinate, and provide to the MCIEAST-MCB CAMLEJ EOC a proposed schedule for the closure of medical and dental facilities and the suspension of non-essential services.
69. <input type="checkbox"/> Populate interactive checklists for TCC II located under the "Tools" section on the control panel in the WebEOC application.
70. <input type="checkbox"/> Review all checklist tasks associated with TCC I contained in this Order.
CO, MCAS New River
71. <input type="checkbox"/> Provide an LNO to serve in the MCIEAST-MCB CAMLEJ EOC to assist the SWO with MCAS New River matters. TCC II watch rotation should expect to work a 24-hour sleeping post and be relieved shortly after TCC I is set.

e. Tropical Cyclone Condition I (TCC I, 12 Hours) Tasks

CG, Deputy Commander, or COS, MCIEAST-MCB CAMLEJ
1. <input type="checkbox"/> Authorize the setting of TCC I.
2. <input type="checkbox"/> Authorize the closure schedules and suspension of non-essential services.
3. <input type="checkbox"/> Authorize the release of non-essential civilian personnel.
AC/S, G-1
4. <input type="checkbox"/> Provide a relief for the AC/S, G-1 watch officer in the MCIEAST-MCB CAMLEJ EOC. TCC I watch rotation should expect to work a 24-hour sleeping post and be relieved shortly after TCC IC is set.
5. <input type="checkbox"/> Update (910) 451-1717 information line.
6. <input type="checkbox"/> Implement the release of non-essential civilian personnel.
7. <input type="checkbox"/> Implement, as directed by the MCIEAST-MCB CAMLEJ EOC, the approved closures and suspension of non-essential services.
8. <input type="checkbox"/> Populate interactive checklists for TCC I located under the "Tools" section on the control panel in the WebEOC application.
9. <input type="checkbox"/> Review all checklist tasks associated with TCC IC contained in this Order.
AC/S, G-3/5
10. <input type="checkbox"/> Monitor weather forecasts and recommend the setting of TCC IC.
11. <input type="checkbox"/> Disseminate the setting of TCC I via official message traffic.
12. <input type="checkbox"/> Update (910) 451-1717 information line.
13. <input type="checkbox"/> Provide a relief for the SWO, AWO, Reports Manager, and EOC Facilities Manager in the MCIEAST-MCB CAMLEJ EOC. TCC I watch rotation should expect to work a 24-hour sleeping post and be relieved shortly after TCC IC is set.
14. <input type="checkbox"/> MCIEAST-MCB CAMLEJ EOC assumes TACON of shelter teams and shelters from H&S BN and opens shelters to receive displaced persons. MCIEAST-MCB CAMLEJ EOC's TACON of shelters will terminate when the MCIEAST-MCB CAMLEJ EOC has directed the closure of the shelter and all displaced persons have left the shelter.
15. <input type="checkbox"/> Disseminate authorized closure schedules and the suspension of non-essential services.
16. <input type="checkbox"/> Monitor the accomplishment of checklist tasks by area commands and by Base Staff sections*. *Interactive checklists are located under the "Tools" section on the control panel in the WebEOC application.

2 6 NOV 2014

17. <input type="checkbox"/> Confirm and coordinate with the AC/S, G-4 and II MEF the requirement for bus drivers to support bus shuttle service between the staging area and Mess Hall 9 for staging area staff and augmented personnel.
18. <input type="checkbox"/> Review all checklist tasks associated with TCC IC contained in this Order.
AC/S, G-4
19. <input type="checkbox"/> Provide a relief for the AC/S, G-4 watch officer in the MCIEAST-MCB CAMLEJ EOC. TCC I watch rotation should expect to work a 24-hour sleeping post and be relieved shortly after TCC IC is set.
20. <input type="checkbox"/> Implement, as directed by the MCIEAST-MCB CAMLEJ EOC, the approved closures and suspension of non-essential services.
21. <input type="checkbox"/> Populate interactive checklists for TCC I located under the "Tools" section on the control panel in the WebEOC application.
22. <input type="checkbox"/> Review all checklist tasks associated with TCC IC contained in this Order.
AC/S, G-6
23. <input type="checkbox"/> Populate interactive checklists for TCC I located under the "Tools" section on the control panel in the WebEOC application.
24. <input type="checkbox"/> Review all checklist tasks associated with TCC IC contained in this Order.
AC/S, G-F
25. <input type="checkbox"/> Provide a relief for the AC/S, G-F watch officer in the MCIEAST-MCB CAMLEJ EOC. TCC I watch rotation should expect to work a 24-hour sleeping post and be relieved shortly after TCC IC is set.
26. <input type="checkbox"/> Implement, as directed by the MCIEAST-MCB CAMLEJ EOC, the approved closures and suspension of non-essential services.
27. <input type="checkbox"/> Secure chillers and air handlers (over 25 tons) in all non-essential administrative and childcare facilities.
28. <input type="checkbox"/> Populate interactive checklists for TCC I located under the "Tools" section on the control panel in the WebEOC application.
29. <input type="checkbox"/> Review all checklist tasks associated with TCC IC contained in this Order.
AC/S, MCCS
30. <input type="checkbox"/> Provide a relief for the MCCS watch officer in the MCIEAST-MCB CAMLEJ EOC. TCC I watch rotation should expect to work a 24-hour sleeping post and be relieved shortly after TCC IC is set.
31. <input type="checkbox"/> Update (910) 451-1717 information line.
32. <input type="checkbox"/> Implement, as directed by the MCIEAST-MCB CAMLEJ EOC, the approved closures and suspension of non-essential services.
33. <input type="checkbox"/> Populate interactive checklists for TCC I located under the "Tools" section on the control panel in the WebEOC application.
34. <input type="checkbox"/> Review all checklist tasks associated with TCC IC contained in this Order.
AC/S, SES
35. <input type="checkbox"/> Provide a relief for the SES, PMO, and FESD watch officers in the MCIEAST-MCB CAMLEJ EOC. TCC I watch rotation should expect to work a 24-hour sleeping post and be relieved shortly after TCC IC is set.
36. <input type="checkbox"/> Complete the evacuation of designated areas as directed by the MCIEAST-MCB CAMLEJ EOC.
37. <input type="checkbox"/> Implement, as directed by the MCIEAST-MCB CAMLEJ EOC, the approved closures and suspension of non-essential services.

38. <input type="checkbox"/> Populate interactive checklists for TCC I located under the "Tools" section on the control panel in the WebEOC application.
39. <input type="checkbox"/> Review all checklist tasks associated with TCC IC contained in this Order.
Chaplain
40. <input type="checkbox"/> Support Emergency Operations via the MCIEAST-MCB CAMLEJ EOC.
AC/S, G-8
41. <input type="checkbox"/> Support Emergency Operations via the MCIEAST-MCB CAMLEJ EOC.
RCO
42. <input type="checkbox"/> Support Emergency Operations via the MCIEAST-MCB CAMLEJ EOC.
Director, PAO
43. <input type="checkbox"/> Provide a relief for the PAO watch officer in the MCIEAST-MCB CAMLEJ EOC. TCC I watch rotation should expect to work a 24-hour sleeping post and be relieved shortly after TCC IC is set.
44. <input type="checkbox"/> Coordinate with the AC/S, G-3/5 for the preparation and release of destructive weather information updates.
45. <input type="checkbox"/> Broadcast authorized closure schedules and the suspension of non-essential services.
46. <input type="checkbox"/> Review all checklist tasks associated with TCC IC contained in this Order.
DOS
47. <input type="checkbox"/> Support Emergency Operations via the MCIEAST-MCB CAMLEJ EOC.
SJA
48. <input type="checkbox"/> Support Emergency Operations via the MCIEAST-MCB CAMLEJ EOC.
CO, H&S BN
49. <input type="checkbox"/> Pass responsibility for the direction of shelter teams and shelters to the MCIEAST-MCB CAMLEJ EOC; TACON (by the MCIEAST-MCB CAMLEJ EOC) will terminate when the MCIEAST-MCB CAMLEJ EOC has directed the closure of the shelter and all augmented tactical vehicles, equipment, and personnel have returned to the staging area (Goettge Field House).
50. <input type="checkbox"/> Implement the release of non-essential military and civilian personnel.
51. <input type="checkbox"/> Restrict military personnel to installation liberty.
52. <input type="checkbox"/> Populate interactive checklists for TCC I located under the "Tools" section on the control panel in the WebEOC application.
53. <input type="checkbox"/> Review all checklist tasks associated with TCC IC contained in this Order.
Area Commanders
54. <input type="checkbox"/> Implement the release of non-essential military and civilian personnel.
55. <input type="checkbox"/> Restrict military personnel to installation liberty.
56. <input type="checkbox"/> Populate interactive checklists for TCC I located under the "Tools" section on the control panel in the WebEOC application.
57. <input type="checkbox"/> Review all checklist tasks associated with TCC IC contained in this Order.
CG, II MEF
58. <input type="checkbox"/> Request that you provide a relief for the II MEF LNO in the MCIEAST-MCB CAMLEJ EOC. TCC I watch rotation should expect to work a 24-hour sleeping post and be relieved shortly after TCC IC is set.
59. <input type="checkbox"/> Request that you implement the release of non-essential military and civilian personnel.
60. <input type="checkbox"/> Request that you restrict military personnel to installation liberty.

61. <input type="checkbox"/> Request that you provide, as identified by the MCIEAST-MCB CAMLEJ EOC, one bus driver to support bus shuttle service between the staging area and Mess Hall 9 for staging area staff and augmented personnel.
62. <input type="checkbox"/> Request that you review all checklist tasks associated with TCC IC contained in this Order.
CO, NAVHOSP
63. <input type="checkbox"/> Provide a relief for the NAVHOSP LNO in the MCIEAST-MCB CAMLEJ EOC. TCC I watch rotation should expect to work a 24-hour sleeping post and be relieved shortly after TCC IC is set.
64. <input type="checkbox"/> Update (910) 451-1717 information line.
65. <input type="checkbox"/> Implement, as directed by the MCIEAST-MCB CAMLEJ EOC, the approved closures and suspension of non-essential services.
66. <input type="checkbox"/> Implement the release of non-essential military and civilian personnel.
67. <input type="checkbox"/> Restrict military personnel to installation liberty.
68. <input type="checkbox"/> Open shelter facilities for pregnant women (third trimester) at the hospital.
69. <input type="checkbox"/> Populate interactive checklists for TCC I located under the "Tools" section on the control panel in the WebEOC application.
70. <input type="checkbox"/> Review all checklist tasks associated with TCC IC contained in this Order.

f. Tropical Cyclone Condition I Caution (TCC IC, Six Hours) Tasks

CG, Deputy Commander, or COS, MCIEAST-MCB CAMLEJ
1. <input type="checkbox"/> Authorize the setting of TCC IC.
2. <input type="checkbox"/> Authorize the restriction of installation access/movement to mission essential, emergency response, and returning residents.
AC/S, G-1
3. <input type="checkbox"/> Provide a relief for the AC/S, G-1 watch officer in the MCIEAST-MCB CAMLEJ EOC. TCC IC watch rotation should expect to work until relieved after TCC IR is set.
4. <input type="checkbox"/> Update (910) 451-1717 information line.
5. <input type="checkbox"/> Complete any remaining closures and secure all non-essential services.
6. <input type="checkbox"/> Populate interactive checklists for TCC IC located under the "Tools" section on the control panel in the WebEOC application.
7. <input type="checkbox"/> Review all checklist tasks associated with TCC IE contained in this Order.
AC/S, G-3/5
8. <input type="checkbox"/> Disseminate the setting of TCC IC via official message traffic.
9. <input type="checkbox"/> Update (910) 451-1717 information line.
10. <input type="checkbox"/> Provide a relief for the SWO, AWO, Reports Manager, and EOC Facilities Manager in the MCIEAST-MCB CAMLEJ EOC. TCC IC watch rotation should expect to work until relieved after TCC IR is set.
11. <input type="checkbox"/> Monitor weather forecasts and recommend the setting of TCC IE.
12. <input type="checkbox"/> Monitor the accomplishment of checklist tasks by area commands and by Base Staff sections*. *Interactive checklists are located under the "Tools" section on the control panel in the WebEOC application.
13. <input type="checkbox"/> Review all checklist tasks associated with TCC IE contained in this Order.

AC/S, G-4
14. <input type="checkbox"/> Provide a relief for the AC/S, G-4 watch officer in the MCIEAST-MCB CAMLEJ EOC. TCC IC watch rotation should expect to work until relieved after TCC IR is set.
15. <input type="checkbox"/> Complete any remaining closures and secure all non-essential services.
16. <input type="checkbox"/> Populate interactive checklists for TCC IC located under the "Tools" section on the control panel in the WebEOC application.
17. <input type="checkbox"/> Review all checklist tasks associated with TCC IE contained in this Order.
AC/S, G-6
18. <input type="checkbox"/> Provide a relief for the AC/S, G-6 watch officer in the MCIEAST-MCB CAMLEJ EOC. TCC IC watch rotation should expect to work until relieved after TCC IR is set.
19. <input type="checkbox"/> Populate interactive checklists for TCC IC located under the "Tools" section on the control panel in the WebEOC application.
20. <input type="checkbox"/> Review all checklist tasks associated with TCC IE contained in this Order.
AC/S, G-F
21. <input type="checkbox"/> Provide a relief for the AC/S, G-F watch officer in the MCIEAST-MCB CAMLEJ EOC. TCC IC watch rotation should expect to work until relieved after TCC IR is set.
22. <input type="checkbox"/> Complete any remaining closures and secure all non-essential services.
23. <input type="checkbox"/> Secure chillers and air handlers (over 25 tons) in mess halls, barracks, priority administrative buildings, and priority medical and emergency service buildings, unless the Heating, Ventilation, and Air Conditioning system is covered by back-up emergency generators.
24. <input type="checkbox"/> Populate interactive checklists for TCC IC located under the "Tools" section on the control panel in the WebEOC application.
25. <input type="checkbox"/> Review all checklist tasks associated with TCC IE contained in this Order.
AC/S, MCCS
26. <input type="checkbox"/> Provide a relief for the MCCS and the Family Services Division watch officers in the MCIEAST-MCB CAMLEJ EOC. TCC IC watch rotation should expect to work until relieved after TCC IR is set.
27. <input type="checkbox"/> Update (910 451-1717 information number.
28. <input type="checkbox"/> Complete any remaining closures and secure all non-essential services.
29. <input type="checkbox"/> Populate interactive checklists for TCC IC located under the "Tools" section on the control panel in the WebEOC application.
30. <input type="checkbox"/> Review all checklist tasks associated with TCC IE contained in this Order.
AC/S, SES
31. <input type="checkbox"/> Provide a relief for the SES, PMO and FESD watch officers in the MCIEAST-MCB CAMLEJ EOC. TCC IC watch rotation should expect to work until relieved after TCC IR is set.
32. <input type="checkbox"/> Enforce the restriction of installation access/movement to mission essential, emergency response, and returning residents (gates will not be closed).
33. <input type="checkbox"/> Block access to Onslow Beach.
34. <input type="checkbox"/> Notify the MCIEAST-MCB CAMLEJ EOC of any reported/observed damage and current/potential emergency situations.
35. <input type="checkbox"/> Populate interactive checklists for TCC IC located under the "Tools" section on the control panel in the WebEOC application.

36. <input type="checkbox"/> Review all checklist tasks associated with TCC IE contained in this Order.
Chaplain
37. <input type="checkbox"/> Support Emergency Operations via the MCIEAST-MCB CAMLEJ EOC.
AC/S, G-8
38. <input type="checkbox"/> Support Emergency Operations via the MCIEAST-MCB CAMLEJ EOC.
RCO
39. <input type="checkbox"/> Support Emergency Operations via the MCIEAST-MCB CAMLEJ EOC.
Director, PAO
40. <input type="checkbox"/> Provide a relief for the PAO watch officer in the MCIEAST-MCB CAMLEJ EOC. TCC IC watch rotation should expect to work until relieved after TCC IR is set.
41. <input type="checkbox"/> Coordinate with the AC/S, G-3/5 for the preparation and release of destructive weather information.
42. <input type="checkbox"/> Review all checklist tasks associated with TCC IE contained in this Order.
DOS
43. <input type="checkbox"/> Support Emergency Operations via the MCIEAST-MCB CAMLEJ EOC.
SJA
44. <input type="checkbox"/> Support Emergency Operations via the MCIEAST-MCB CAMLEJ EOC.
CO, H&S BN
45. <input type="checkbox"/> Restrict all personnel to appointed place of duty, quarters, barracks, or shelters.
46. <input type="checkbox"/> Secure liberty.
47. <input type="checkbox"/> Populate interactive checklists for TCC IC located under the "Tools" section on the control panel in the WebEOC application.
48. <input type="checkbox"/> Review all checklist tasks associated with TCC IE contained in this Order.
Area Commanders
49. <input type="checkbox"/> Restrict all personnel to appointed place of duty, quarters, barracks, or shelters.
50. <input type="checkbox"/> Secure liberty.
51. <input type="checkbox"/> Populate interactive checklists for TCC IC located under the "Tools" section on the control panel in the WebEOC application.
52. <input type="checkbox"/> Review all checklist tasks associated with TCC IE contained in this Order.
CG, II MEF
53. <input type="checkbox"/> Request that you provide a relief for the II MEF LNO in the MCIEAST-MCB CAMLEJ EOC. TCC IC watch rotation should expect to work until relieved after TCC IR is set.
54. <input type="checkbox"/> Request that you restrict all personnel to appointed place of duty, quarters, barracks, or shelters.
55. <input type="checkbox"/> Request that you secure liberty.
56. <input type="checkbox"/> Request that you review all checklist tasks associated with TCC IE contained in this Order.
CO, NAVHOSP
57. <input type="checkbox"/> Provide a relief for the NAVHOSP LNO in the MCIEAST-MCB CAMLEJ EOC. TCC IC watch rotation should expect to work until relieved after TCC IR is set.
58. <input type="checkbox"/> Update (910) 451-1717 information line.
59. <input type="checkbox"/> Complete any remaining closures and secure all non-essential services.

60. <input type="checkbox"/> Notify the MCIEAST-MCB CAMLEJ EOC of the status of all medical issues/situations.
61. <input type="checkbox"/> Restrict all personnel to appointed place of duty, quarters, barracks, or shelters.
62. <input type="checkbox"/> Secure liberty.
63. <input type="checkbox"/> Populate interactive checklists for TCC IC located under the "Tools" section on the control panel in the WebEOC application.
64. <input type="checkbox"/> Review all checklist tasks associated with TCC IE contained in this Order.

g. Destructive Weather Condition I Emergency (TCC IE) Tasks

CG, Deputy Commander, or COS, MCIEAST-MCB CAMLEJ
1. <input type="checkbox"/> Authorize the setting of TCC IE.
2. <input type="checkbox"/> Authorize the restriction of installation access/movement to emergency response, within safety parameters.
AC/S, G-1
3. <input type="checkbox"/> Support destructive weather operations from within the EOC.
4. <input type="checkbox"/> Monitor weather forecasts and damage reports. Be prepared to (BPT) make recommendation concerning the resumption of regular services once the storm has passed.
5. <input type="checkbox"/> Populate interactive checklists for TCC IE located under the "Tools" section on the control panel in the WebEOC application.
6. <input type="checkbox"/> Review all checklist tasks associated with TCC IR contained in this Order.
AC/S, G-3/5
7. <input type="checkbox"/> Disseminate the setting of TCC IE via official message traffic.
8. <input type="checkbox"/> Update (910) 451-1717 information line.
9. <input type="checkbox"/> Direct and coordinate destructive weather operations from the MCIEAST-MCB CAMLEJ EOC.
10. <input type="checkbox"/> Monitor weather forecasts and damage reports and recommend the setting of TCC IR.
11. <input type="checkbox"/> Monitor the accomplishment of checklist tasks by area commands and by Base Staff sections*. *Interactive checklists are located under the "Tools" section on the control panel in the WebEOC application.
12. <input type="checkbox"/> Review all checklist tasks associated with TCC IR contained in this Order.
AC/S, G-4
13. <input type="checkbox"/> Support destructive weather operations from within the EOC. Address emergent issues that occur during TCC IE when it is safe and important to do so, and in coordination with the MCIEAST-MCB CAMLEJ EOC.
14. <input type="checkbox"/> Monitor weather forecasts and damage reports. BPT make recommendation concerning the resumption of regular services once the storm has passed.
15. <input type="checkbox"/> Populate interactive checklists for TCC IE located under the "Tools" section on the control panel in the WebEOC application.
16. <input type="checkbox"/> Review all checklist tasks associated with TCC IR contained in this Order.
AC/S, G-6
17. <input type="checkbox"/> Support destructive weather operations from within the EOC and Marine Air Ground Task Force Information Technology Center.
18. <input type="checkbox"/> Populate interactive checklists for TCC IE located under the "Tools" section on the control panel in the WebEOC application.

26 NOV 2014

19. <input type="checkbox"/> Review all checklist tasks associated with TCC IR contained in this Order.
AC/S, G-F
20. <input type="checkbox"/> Support destructive weather operations from within the EOC and DCRC. Address emergent issues which occur during TCC IE when it is safe and important to do so, and in coordination with the MCIEAST-MCB CAMLEJ EOC.
21. <input type="checkbox"/> Advise the MCIEAST-MCB CAMLEJ EOC of damage to facilities and utilities outages. Conduct damage assessments and repairs when safe to do so. Provide advice and opinion to the EOC regarding the appropriate time to set TCC IR.
22. <input type="checkbox"/> Monitor weather forecasts and damage reports. Make recommendation concerning the resumption of regular services once the storm has passed.
23. <input type="checkbox"/> Populate interactive checklists for TCC IE located under the "Tools" section on the control panel in the WebEOC application.
24. <input type="checkbox"/> Review all checklist tasks associated with TCC IR contained in this Order.
AC/S, MCCS
25. <input type="checkbox"/> Support destructive weather operations from within the EOC.
26. <input type="checkbox"/> Monitor weather forecasts and damage reports. BPT make recommendation concerning the resumption of regular services once the storm has passed.
27. <input type="checkbox"/> Populate interactive checklists for TCC IE located under the "Tools" section on the control panel in the WebEOC application.
28. <input type="checkbox"/> Review all checklist tasks associated with TCC IR contained in this Order.
AC/S, SES
29. <input type="checkbox"/> Support destructive weather operations from within the EOC and the DOC. Patrol and address emergent issues that occur during TCC IE when it is safe and important to do so, and in coordination with the MCIEAST-MCB CAMLEJ EOC.
30. <input type="checkbox"/> Enforce the restriction of installation access/movement to emergency response, within safety parameters.
31. <input type="checkbox"/> Report road blockages, damage to facilities, utilities outages, fires, and medical emergencies to the MCIEAST-MCB CAMLEJ EOC. Conduct road safety assessments as soon as it is safe to do so. Provide advice and opinion to the EOC regarding the appropriate time to set TCC IR.
32. <input type="checkbox"/> Monitor weather forecasts and damage reports. BPT make recommendation concerning the resumption of regular services once the storm has passed.
33. <input type="checkbox"/> Populate interactive checklists for TCC IE located under the "Tools" section on the control panel in the WebEOC application.
34. <input type="checkbox"/> Review all checklist tasks associated with TCC IR contained in this Order.
Chaplain
35. <input type="checkbox"/> Support Emergency Operations via the MCIEAST-MCB CAMLEJ EOC.
36. <input type="checkbox"/> Review all checklist tasks associated with TCC IR contained in this Order.
AC/S, G-8
37. <input type="checkbox"/> Support Emergency Operations via the MCIEAST-MCB CAMLEJ EOC.
38. <input type="checkbox"/> Review all checklist tasks associated with TCC IR contained in this Order.
RCO
39. <input type="checkbox"/> Support Emergency Operations via the MCIEAST-MCB CAMLEJ EOC.
40. <input type="checkbox"/> Review all checklist tasks associated with TCC IR contained in this Order.
Director, PAO
41. <input type="checkbox"/> Support destructive weather operations from within the EOC.

26 NOV 2014

42. <input type="checkbox"/> Coordinate with the AC/S, G-3/5 for the preparation and release of destructive weather information.
43. <input type="checkbox"/> Review all checklist tasks associated with TCC IR contained in this Order.
DOS
44. <input type="checkbox"/> Support Emergency Operations via the MCIEAST-MCB CAMLEJ EOC.
45. <input type="checkbox"/> Monitor weather forecasts and damage reports. BPT make recommendation concerning the resumption of regular services once the storm has passed.
46. <input type="checkbox"/> Review all checklist tasks associated with TCC IR contained in this Order.
SJA
47. <input type="checkbox"/> Support Emergency Operations via the MCIEAST-MCB CAMLEJ EOC.
48. <input type="checkbox"/> Review all checklist tasks associated with TCC IR contained in this Order.
CO, H&S BN
49. <input type="checkbox"/> Support destructive weather operations from within the Area Command Post. Patrol and address emergent issues that occur during TCC IE when it is safe and important to do so. Report significant occurrences to the MCIEAST-MCB CAMLEJ EOC.
50. <input type="checkbox"/> Monitor weather forecasts and damage reports. BPT make recommendation concerning the resumption of regular services once the storm has passed.
51. <input type="checkbox"/> Populate interactive checklists for TCC IE located under the "Tools" section on the control panel in the WebEOC application.
52. <input type="checkbox"/> Review all checklist tasks associated with TCC IR contained in this Order.
Area Commanders
53. <input type="checkbox"/> Support destructive weather operations from within the Area Command Post. Patrol and address emergent issues that occur during TCC IE when it is safe and important to do so. Report significant occurrences to the MCIEAST-MCB CAMLEJ EOC.
54. <input type="checkbox"/> Monitor weather forecasts and damage reports. BPT make recommendation concerning the resumption of regular services once the storm has passed.
55. <input type="checkbox"/> Populate interactive checklists for TCC IE located under the "Tools" section on the control panel in the WebEOC application.
56. <input type="checkbox"/> Review all checklist tasks associated with TCC IR contained in this Order.
CG, II MEF
57. <input type="checkbox"/> Request that you support destructive weather operations from within DWOCs and Area Command Posts. Patrol and address emergent issues that occur during TCC IE when it is safe and important to do so. Report significant occurrences to the MCIEAST-MCB CAMLEJ EOC.
58. <input type="checkbox"/> Request that you monitor weather forecasts and damage reports. BPT make recommendation concerning the resumption of regular services once the storm has passed.
59. <input type="checkbox"/> Request that you review all checklist tasks associated with TCC IR contained in this Order.

CO, NAVHOSP
60. <input type="checkbox"/> Support destructive weather operations from within the MCIEAST-MCB CAMLEJ EOC, the NAVHOSP EOC, and the Area Command Post. Patrol and address emergent issues that occur during TCC IE when it is safe and important to do so. Report significant occurrences to the MCIEAST-MCB CAMLEJ EOC.
61. <input type="checkbox"/> Notify the MCIEAST-MCB CAMLEJ EOC of the status of all medical issues/situations.
62. <input type="checkbox"/> Monitor weather forecasts and damage reports. BPT make recommendation concerning the resumption of regular services once the storm has passed.
63. <input type="checkbox"/> Populate interactive checklists for TCC IE located under the "Tools" section on the control panel in the WebEOC application.
64. <input type="checkbox"/> Review all checklist tasks associated with TCC IR contained in this Order.

h. Tropical Cyclone Condition I Recovery (TCC IR) Tasks

CG, Deputy Commander, or COS, MCIEAST-MCB CAMLEJ
1. <input type="checkbox"/> Authorize the setting of TCC IR.
2. <input type="checkbox"/> Based upon recommendations, direct personnel restrictions, prioritization of recovery operations, timetable for the return to TCC V, and stand down of the current destructive weather operations structure.
AC/S, G-1
3. <input type="checkbox"/> Provide a relief for the AC/S, G-1 watch officer in the MCIEAST-MCB CAMLEJ EOC once it is safe to do so. Personnel scheduled for the TCC IR watch rotation should be sourced from a qualified pool of personnel who live on or close to MCB CAMLEJ. TCC IR watch rotation should expect to work a 24-hour sleeping post.
4. <input type="checkbox"/> Provide the MCIEAST-MCB CAMLEJ EOC with an informal hazard/damage assessment. Recommend a timeline for the opening and hours of operation for functional areas.
5. <input type="checkbox"/> Compile expenditures for recovery operations and damages for submission to the AC/S, G-8.
6. <input type="checkbox"/> Populate interactive checklists for TCC IR located the under the "Tools" section on the control panel in the WebEOC application.
AC/S, G-3/5
7. <input type="checkbox"/> Based upon current weather situations, initial damage assessments, and potential hazard/emergency situations, recommend the setting of TCC V. TCC IR watch rotation should expect to work a 24-hour sleeping post.
8. <input type="checkbox"/> Disseminate the setting of TCC IR via official message traffic.
9. <input type="checkbox"/> Coordinate with rotary wing aircraft for aerial over flight.
10. <input type="checkbox"/> Collect and compile casualty and damage assessments.
11. <input type="checkbox"/> Monitor the accomplishment of checklist tasks by area commands and by Base Staff sections*. *Interactive checklists are located under the "Tools" section on the control panel in the WebEOC application.
12. <input type="checkbox"/> Compile expenditures for recovery operations and damages for submission to the AC/S, G-8.
13. <input type="checkbox"/> Coordinate with the DCRC the prioritization of recovery operations.
14. <input type="checkbox"/> Determine when it is appropriate and safe to close shelters. Consider the trafficability of roads, condition of housing, and the level/reliability of utilities services.

15. <input type="checkbox"/> Direct the demobilization of the DWTF. Consider sequencing demobilization and identifying specific resources for exception via the AC/S, G-4. Ensure II MEF is aware of plans to demobilize resources.
16. <input type="checkbox"/> Transition recovery operations to the DCRC and stand down the MCIEAST-MCB CAMLEJ EOC.
AC/S, G-4
17. <input type="checkbox"/> Provide a relief for the AC/S, G-4 watch officer in the MCIEAST-MCB CAMLEJ EOC once it is safe to do so. Personnel scheduled for the TCC IR watch rotation should be sourced from a qualified pool of personnel who live on or close to MCB CAMLEJ. TCC IR watch rotation should expect to work a 24-hour sleeping post.
18. <input type="checkbox"/> Provide the MCIEAST-MCB CAMLEJ EOC with an informal hazard/damage assessment. Recommend a timeline for the opening and hours of operation for functional areas.
19. <input type="checkbox"/> Compile department expenditures for recovery operations and damages for submission to the AC/S, G-8.
20. <input type="checkbox"/> On order from the MCIEAST-MCB CAMLEJ EOC, conduct the redeployment of deployed components of DWTF to the staging area. Report the readiness of the DWTF to demobilize and return to II MEF control. On order from the MCIEAST-MCB CAMLEJ EOC, demobilize the DWTF and return it to II MEF. On order from MCIEAST-MCB CAMLEJ EOC, secure the staging area.
21. <input type="checkbox"/> Coordinate with shelter managers for the pick-up of unused MREs.
22. <input type="checkbox"/> Populate interactive checklists for TCC IR located under the "Tools" section on the control panel in the WebEOC application.
AC/S, G-6
23. <input type="checkbox"/> Provide a relief for the AC/S, G-6 watch officer in the MCIEAST-MCB CAMLEJ EOC once it is safe to do so. Personnel scheduled for the TCC IR watch rotation should be sourced from a qualified pool of personnel who live on or close to MCB CAMLEJ. TCC IR watch rotation should expect to work a 24-hour sleeping post.
24. <input type="checkbox"/> Provide the MCIEAST-MCB CAMLEJ EOC with an informal hazard/damage assessment. Recommend a timeline for the opening and hours of operation for functional areas.
25. <input type="checkbox"/> Compile department expenditures for recovery operations and damages for submission to the AC/S, G-8.
26. <input type="checkbox"/> Coordinate with the MCIEAST-MCB CAMLEJ EOC the prioritizations of recovery operations.
27. <input type="checkbox"/> Populate interactive checklists for TCC IR located under the "Tools" section on the control panel in the WebEOC application.
AC/S, G-F
28. <input type="checkbox"/> Provide a relief for the AC/S, G-F watch officer in the MCIEAST-MCB CAMLEJ EOC once it is safe to do so. Personnel scheduled for the TCC IR watch rotation should be sourced from a qualified pool of personnel who live on or close to MCB CAMLEJ. TCC IR watch rotation should expect to work a 24-hour sleeping post.
29. <input type="checkbox"/> Provide the MCIEAST-MCB CAMLEJ EOC with hazard/damage assessments, recommended priorities for recovery operations, and a timeline for the opening and hours of operation for functional areas.
30. <input type="checkbox"/> Compile expenditures for recovery operations and damages for submission to the AC/S, G-8.
31. <input type="checkbox"/> Coordinate with the MCIEAST-MCB CAMLEJ EOC the prioritization of recovery operations.

32. <input type="checkbox"/> Populate interactive checklists for TCC IR located under the "Tools" section on the control panel in the WebEOC application.
33. <input type="checkbox"/> Transition recovery operations from the MCIEAST-MCB CAMLEJ EOC and activate the DCRC on a 24-hour basis, as required.
AC/S, MCCS
34. <input type="checkbox"/> Provide a relief for the MCCS watch officer in the MCIEAST-MCB CAMLEJ EOC once it is safe to do so. Personnel scheduled for the TCC IR watch rotation should be sourced from a qualified pool of personnel who live on or close to MCB CAMLEJ. TCC IR watch rotation should expect to work a 24-hour sleeping post.
35. <input type="checkbox"/> Provide the MCIEAST-MCB CAMLEJ EOC with an informal hazard/damage assessment. Recommend a timeline for the opening and hours of operation for functional areas.
36. <input type="checkbox"/> Compile expenditures for recovery operations and damages for submission to the AC/S, G-8.
37. <input type="checkbox"/> Populate interactive checklists for TCC IR located under the "Tools" section on the control panel in the WebEOC application.
AC/S, SES
38. <input type="checkbox"/> Provide a relief for the SES, PMO, and FESD watch officers in the MCIEAST-MCB CAMLEJ EOC once it is safe to do so. Personnel scheduled for the TCC IR watch rotation should be sourced from a qualified pool of personnel who live on or close to MCB CAMLEJ. TCC IR watch rotation should expect to work a 24-hour sleeping post.
39. <input type="checkbox"/> Provide the MCIEAST-MCB CAMLEJ EOC with an informal hazard/damage assessment. Recommend a timeline for the opening and hours of operation for functional areas.
40. <input type="checkbox"/> Compile expenditures for recovery operations and damages for submission to the AC/S, G-8.
41. <input type="checkbox"/> Identify to the MCIEAST-MCB CAMLEJ EOC any requirements for patrol and security augmentation.
42. <input type="checkbox"/> Enforce, until rescinded, all evacuations and restrictions.
43. <input type="checkbox"/> Populate interactive checklists for TCC IR located under the "Tools" section on the control panel in the WebEOC application.
Chaplain
44. <input type="checkbox"/> Support Emergency Operations via the MCIEAST-MCB CAMLEJ EOC.
AC/S, G-8
45. <input type="checkbox"/> Support Emergency Operations via the MCIEAST-MCB CAMLEJ EOC.
RCO
46. <input type="checkbox"/> Support Emergency Operations via the MCIEAST-MCB CAMLEJ EOC.
Director, PAO
47. <input type="checkbox"/> Provide a relief for the PAO watch officer in the MCIEAST-MCB CAMLEJ EOC once it is safe to do so. Personnel scheduled for the TCC IR watch rotation should be sourced from a qualified pool of personnel who live on or close to MCB CAMLEJ. TCC IR watch rotation should expect to work a 24-hour sleeping post.
48. <input type="checkbox"/> Compile expenditures for recovery operations and damages for submission to the AC/S, G-8.
49. <input type="checkbox"/> Coordinate with AC/S, G-3/5 for the preparation and release of destructive weather information.
DOS
50. <input type="checkbox"/> Support Emergency Operations via the MCIEAST-MCB CAMLEJ EOC.

SJA
51. <input type="checkbox"/> Support Emergency Operations via the MCIEAST-MCB CAMLEJ EOC.
CO, H&S BN
52. <input type="checkbox"/> Resume TACON of shelters once the MCIEAST-MCB CAMLEJ EOC has directed the closure of the shelter, all sheltered personnel have departed, and tactical vehicles have been reported returned to the staging area (Goettge Field House).
53. <input type="checkbox"/> Conduct clean up and restoration of all closed shelter sites. Conduct a joint inspection with schools facilities representatives to identify repair requirements and costs incurred by the school due to the facilities' use as shelters. Submit a list of costs/requirements to the EOC.
54. <input type="checkbox"/> Coordinate with shelter managers to palletize unused ARC Emergency Rations and arrange pick up through IEM.
55. <input type="checkbox"/> Populate interactive checklists for TCC IR located under the "Tools" section on the control panel in the WebEOC application.
56. <input type="checkbox"/> Ensure shelter managers turn in subsistence rosters to AC/S, G-4 (Food Service Office).
Area Commanders
57. <input type="checkbox"/> Provide the MCIEAST-MCB CAMLEJ EOC with an informal hazard/damage assessment.
58. <input type="checkbox"/> Compile expenditures for recovery operations and damages for submission to the AC/S, G-8.
59. <input type="checkbox"/> Populate interactive checklists for TCC IR located under the "Tools" section on the control panel in the WebEOC application.
CG, II MEF
60. <input type="checkbox"/> Request that you provide a relief for the II MEF LNO in the MCIEAST-MCB CAMLEJ EOC once it is safe to do so. Personnel scheduled for the TCC IR watch rotation should be sourced from a qualified pool of personnel who live on or close to MCB CAMLEJ.
61. <input type="checkbox"/> Request that you compile expenditures for recovery operations and damages for submission to the AC/S, G-8.
62. <input type="checkbox"/> Request that you provide a representative to the staging area (Goettge Field House) for the redeployment of vehicles, equipment, and personnel.
63. <input type="checkbox"/> Request that you provide a representative to the DCRC to expedite recovery operations. Coordinate, as required, additional vehicle, equipment and personnel requirements.
CO, NAVHOSP
64. <input type="checkbox"/> Provide a relief for the NAVHOSP LNO in the MCIEAST-MCB CAMLEJ EOC once it is safe to do so. Personnel scheduled for the TCC IR watch rotation should be sourced from a qualified pool of personnel who live on or close to MCB CAMLEJ.
65. <input type="checkbox"/> Provide the MCIEAST-MCB CAMLEJ EOC with an informal hazard/damage assessment. Recommend a timeline for the opening and hours of operation for functional areas.
66. <input type="checkbox"/> Coordinate the closure of pregnant woman's shelter with Base EOC. Release occupants to their quarters once it is determined that their condition does not warrant hospitalization and the EOC has determined it is safe to do so.
67. <input type="checkbox"/> Compile expenditures for recovery operations and damages for submission to the AC/S, G-8.
68. <input type="checkbox"/> Populate interactive checklists for TCC IR located under the "Tools" section on the control panel in the WebEOC application.

2 6 NOV 2014

i. Vehicle Restrictions. The swing bridge en-route to Onslow Beach is secured to vehicle traffic when sustained wind speeds reach 35 knots (40 mph). Additionally, vehicle movement is restricted as follows: less than 44 knots (51 mph), non-tactical vehicles are permitted; 45 to 87 knots (52 to 100 mph), tactical vehicles only; greater than 88 knots (101 mph), tactical vehicles only when responding to a life or death situation.

Chapter 4

MCIEAST-MCB CAMLEJ EOC

1. General. The MCIEAST-MCB CAMLEJ EOC will be activated on order of the CG or his designee representative (Deputy Commander, COS, or the AC/S, G-3/5) for destructive weather operations. The MCIEAST-MCB CAMLEJ EOC serves as the single Command and Control (C2) node to direct and coordinate required actions. Prior to activation, the AC/S, G-3/5 will provide the minimum staffing required to perform C2 functions and to monitor destructive weather events. Reference (e) provides guidance, information, and instructions for MCIEAST-MCB CAMLEJ EOC Standard Operating Procedures (SOP).

2. Task Organization. The basic staffing plan for the MCIEAST-MCB CAMLEJ EOC during destructive weather events is shown below. Additional personnel, subject matter experts, and LNOs may be requested by the AC/S, G-3/5, dependent on specific circumstances of any given storm.

SWO	(report for duty during TCC III)
AC/S, G-1 Watch Officer	(report for duty during TCC III)
AC/S, G-4 Watch Officer	(report for duty during TCC III)
AWO	(report for duty during TCC II)
AC/S, G-6 Watch Officer	(report for duty during TCC II)
AC/S, G-F Watch Officer	(report for duty during TCC II)
MCCS Watch Officer	(report for duty during TCC II)
SES Senior Watch Officer	(report for duty during TCC II)
FESD Watch Officer	(report for duty during TCC II)
PMO Watch Officer	(report for duty during TCC II)
Duty Chaplain	(report for duty during TCC II)
Duty Comptroller	(report for duty during TCC II)
Duty Contractor	(report for duty during TCC II)
PAO Watch Officer	(report for duty during TCC II)
DOS Watch Officer	(report for duty during TCC II)
SJA	(report for duty during TCC II)
NAVHOSP LNO	(report for duty during TCC II)
II MEF LNO	(report for duty during TCC II)
Onslow County LNO	(report for duty during TCC II)

3. Reporting Instructions and Shift Change for Tropical Cyclones

a. The MCIEAST-MCB CAMLEJ EOC partially activates at TCC III. The SWO, the AC/S, G-1 Watch Officer, and an AC/S, G-4 Watch Officer report immediately upon notification, establish work stations, and support the activation, staging, and assumption of TACON over the DWTF.

b. The MCIEAST-MCB CAMLEJ EOC fully activates at TCC II. Watch Officers and LNOs should arrive within one hour of notification and expect to stand a 12-hour shift.

c. At TCC I, the Watch will rotate. Incoming Watch Officers and LNOs should arrive within one hour of notification and expect to stand a six hour shift.

26 NOV 2014

d. At TCC IC, the Watch will rotate for the last time before TCC IR. Incoming Watch Officers and LNOs should arrive within one hour of notification and expect to stand an indefinite (sleeping) shift.

e. At TCC IR, the EOC will call for shift relief. Personnel designated to replace the on-duty Watch Officers and LNOs will report to the EOC as quickly as is safely practicable. This relief should expect to stand a 24-hour (sleeping) shift.

f. The EOC will remain active until the CG, MCIEAST-MCB CAMLEJ is satisfied that the situation on Base has stabilized, all immediate recovery tasks have been completed, and responsibility for long-term recovery operations is passed to the DCRC.

g. All Watch Officers and LNOs should report with the necessary orders, SOPs, documents, and forms relative to their functional area(s).

h. Individual watch standers are required to bring their own food, drinks other than water, and hygiene supplies. Refrigeration, microwave, head/shower facilities, small lockers, cots, and blankets are available to EOC Watch Officers and LNOs from the EOC Facilities Manager.

i. No watch stander will be released from their work station until properly relieved.

4. Reporting Instructions and Shift Change for Non-Tropical Storms

a. Due to the characteristics of most non-tropical storms, the decision to activate the MCIEAST-MCB CAMLEJ EOC will likely come with very little notice. The AC/S, G-3/5 will alert the MCIEAST-MCB CAMLEJ primary and special staff and tenant commands of the EOC activation via mass notification message (targeting specific staff members using work, cell, and home phone numbers, and work and private email). Once notified, primary and special staff members and tenant commands will assign watch and liaison officers from within their activity and direct those persons to report to the EOC as quickly as is safely practicable. All watch officers thus assigned should expect to stand a 12-hour shift.

b. Once the EOC has been activated, the EOC Facilities Manager will recommend a schedule for shift change to the AC/S, G-3/5 for approval. Once approved, this schedule will be published to the primary and special staff and tenant commands. When notified of the shift change schedule, the primary and special staff members and tenant commands will assign watch and liaison officers from within their activity to the schedule and return it to the EOC Facilities Manager. The EOC Facilities Manager will compile the input received and publish the EOC Watch Bill.

c. Once published, the EOC Watch Bill is considered to be an order from the CG. Changes must be identified to, and approved by, the AC/S, G-3/5 prior to the start of the affected shift rotation.

d. The EOC will remain active until the CG is satisfied that the situation on Base has stabilized, all immediate recovery tasks have been completed, and responsibility for long-term recovery operations is passed to the AC/S, G-F.

2 6 NOV 2014

e. All Watch Officers and LNOs should report with the necessary orders, SOPs, documents, and forms relative to their functional area(s).

f. Individual watch standers are required to bring their own food, drinks other than water, and hygiene supplies. Refrigeration, microwave, head/shower facilities, small lockers, cots, and blankets are available to EOC Watch Officers and LNOs from the EOC Facilities Manager.

g. No watch stander will be released from their work station until properly relieved.

26 NOV 2014

Chapter 5

Vehicle, Equipment, and Personnel Augmentation

1. General. The Base requires both equipment and personnel augmentation from tenant commands in order to effectively prepare for and address serious emergencies. In the case of Tropical Cyclones, this Order establishes a standing list of augmentation requirements based upon specific and identifiable needs and past experience.

a. Augmentation falls into two categories: those augmentees assigned to the DWTF, and those assigned to the DCRC. In general, those elements assigned to the DWTF will report to a staging area (normally located at the Goettge Field House) during TCC II.

b. Once activated, inspected, and received at the Staging Area or DCRC, augmentees become TACON to MCB CAMLEJ for the duration of the emergency.

c. Once the CG deems that the emergency has passed, elements assigned to the DWTF and those assigned to the DCRC are demobilized and returned to their parent commands when they are no longer needed to support recovery operations.

2. DWTF

a. Activation. All vehicles and equipment (complete with operators, drivers, and SL-3) will report to the staging area (normally Goettge Field House) during the first eight hours of TCC III. All vehicles should report fully fueled and display a placard indicating the line number (from Figures 5-2 through 5-5 below) that equipment/personnel fills. Once at the staging area, the vehicles and personnel will be received, inspected, and organized into movement serials and otherwise prepared for deployment to their final destination as identified in Figure 5-1 and 5-5 below. All equipment and personnel will be entered into the DWTF Status Board in the WebEOC application by the staging area staff. REMEMBER: ACTIVATION OF THE DWTF IS CONDUCTED AT THE STAGING AREA. ALL EQUIPMENT IS REQUIRED TO REPORT TO THE STAGING AREA BEFORE REPORTING TO ITS ASSIGNED FINAL DESTINATION.

b. Operations and Logistics. Once received and inspected, MCB CAMLEJ assume TACON of the DWTF until demobilization at the end of emergency operations. Depending on the specific circumstances of the emergency, personnel assigned to the DWTF may be further deployed to prescribed locations or held in general support at the staging area for dispatch to meet emergent needs. Feeding, fueling, repair, and medical treatment will be provided to the DWTF by MCB CAMLEJ during the period of TACON. MCB CAMLEJ will maintain accountability of personnel and equipment using the DWTF Status Board in the WebEOC application, thus allowing anyone with access to the application to check the status and location down to the individual line number level.

c. Demobilization. Demobilization is begun once the CG, MCIEAST-MCB CAMLEJ deems that an assigned resource (down to the line number level) is no longer needed to support emergency operations. That decision is implemented from the MCIEAST-MCB CAMLEJ EOC by the SWO. Demobilization is conducted at the Staging Area. Demobilization includes physical inspection of vehicles, equipment, and personnel by both MCB CAMLEJ and II MEF personnel; logging off

2 6 NOV 2014

from the DWTF Status Board in WebEOC; and finally, their release and physical return to II MEF. REMEMBER: DEMOBILIZATION OF ALL EQUIPMENT AND PERSONNEL WILL BE CONDUCTED AT THE STAGING AREA. UNDER NO CIRCUMSTANCES IS ANY COMPONENT OF THE DWTF TO RETURN TO ITS PARENT COMMAND WITHOUT FIRST PASSING THROUGH THE STAGING AREA AND COMPLETING THE DEMOBILIZATION PROCESS.

d. Individual Equipment. All personnel assigned to the DWTF must report with the following equipment:

Seasonal work uniform (two)
Full rain gear
Sleep system including cover and mat
Outer Tactical Vest (OTV)/Flak Jacket no plates, no plate carriers
Water system
First aid kit
Flashlight with two sets of batteries
Helmet
Eye protection
Ear protection
Individual hygiene kit
A one-day supply of MREs (three total)

e. Specific instructions will be provided to all personnel based on the type of equipment required, line number, and type of communications equipment required (complete with operators, drivers, and SL-3). They will report to the Staging Area (normally Goettge Field House) during the first eight hours of TCC III. Once at the Staging Area, the vehicles and personnel will be received, inspected, and organized into movement serials and otherwise prepared for deployment to their final destination identified in Figure 5-1.

Line #	Call sign/Command/Final destination	Bldg number	Sourced by	Assigned frequency (Primary) (Secondary)	Requirement
1	MCIEAST-MCB CAMLEJ EOC	1	II MEF	30.300 (P) 38.300 (S)	MRC-145 w/OE-254 or VRC-89, hard tactical vehicle w/operator & "A" driver
2	MCIEAST-MCB CAMLEJ DCRC	1005	II MEF		MRC-145 w/OE-254 or VRC-89, hard tactical vehicle w/operator & "A" driver
3	AC/S, G-6 Marine Information Technology Support Center (MITSC)	24	II MEF		PRC-119 w/OE-254, tactical vehicle w/operator & "A" driver
4	Camp Lejeune PMO	3	II MEF		PRC-119 w/OE-254 hard tactical vehicle, w/operator & "A" driver
5	NAVHOSP	NH-100	II MEF		MRC-145 w/OE-254 or VRC-89, tactical vehicle w/operator & "A" driver
6	HQSPTBN	8	II MEF		PRC-119 w/OE-254, hard tactical vehicle w/operator & "A" driver
7	Marine Corps Engineer School (MCES) (Courthouse Bay)	BB-28	II MEF		MRC-145 w/OE-254 or VRC-89, hard tactical vehicle w/operator & "A" driver
8	Reserved line number	∅	-		-
9	Reserved line number	∅	-		-
10	Reserved line number	∅	-		-
11	Weapons Training Battalion (WTBN) (Stone Bay COC)	RR-11	II MEF		MRC-145 w/OE-254 or VRC-89, hard tactical vehicle w/operator & "A" driver
12	II MEF DWOC	H-1	II MEF * See Note	31.000 49.500	MRC-145 w/OE-254 or VRC-89, hard tactical vehicle w/operator & "A" driver
13	Reserved line#	∅	-	-	-
14	Reserved line#	∅	-	-	-
15	MCAS NR EOC	AS-843	II MEF * See Note	47.925 48.675	MRC-145 w/OE-254 OR VRC-89, hard tactical vehicle w/operator & "A" driver
16	Goettge Field House - (staging area only)	751	II MEF * See Note ** See Note	30.300 (P) 38.300 (S)	PRC-119 w/OE-254, hard tactical vehicle w/operator & "A" driver
17	Reserved line#	∅	-	-	-

Figure 5-1.--Communications and Information-Equipment and Personnel

(1) Tactical Vehicles and Equipment. General tactical vehicles and trailers (complete with operators, drivers, and SL-3) will report to the Staging Area (normally Goettge Field House) during the first eight hours of TCC III. Once at the Staging Area, the vehicles and personnel will be

2 6 NOV 2014

received, inspected, and organized into movement serials and otherwise prepared for deployment to their final destinations identified in Figures 5-2 through 5-5.

Line #	Requirement	#	Sourced By	Deploy at TCC	Deploy To	Further Deploy at TCC	Further Deploy To
18	MK 23 (SL-3) w/driver & "A" driver	4	II MEF	III	Goettge Field House	II	MCIEAST-MCB CAMLEJ PMO Bldg.3
19	MK 23 Truck w/driver & "A" driver	2	II MEF	III	Goettge Field House	TBD	If/as directed
20	MK 36 Wrecker(SL-3) w/operator & "A" driver	1	II MEF	III	Goettge Field House	II	MCIEAST-MCB CAMLEJ PMO Bldg.3
21	MK 48/14 LVS Tandem Tow w/operator & "A" driver	2	II MEF	III	Goettge Field House	TBD	If/as directed
22	MK 48/14 LVS & Trailer w/SIXCON/pump/100' Hose w/operator & "A" driver (1 unleaded & 1 diesel)	2	II MEF	III	Goettge Field House	II	MCIEAST-MCB CAMLEJ Fuel Farm
23	MK 48/16/M870 Lowboy w/operator & "A" driver	2	II MEF	III	Goettge Field House	TBD	If/as directed
24	Reserved line#	0	-	-	-	-	-
25	M1043/M1044 (SL-3) HMMWV Hardback w/driver & "A" driver	12	II MEF	III	Goettge Field House	II	MCIEAST-MCB CAMLEJ PMO Bldg.3
26	M1043/M1044 HMMWV Hardback w/driver & "A" driver	1	II MEF	III	Goettge Field House	TBD	If/as directed
27	Reserved line#	0	-	-	-	-	-
28	M1043/M1044 HMMWV Hardback w/driver & "A" driver	1	II MEF	III	Goettge Field House	II	Wallace Creek Gym (Shelter) WC1
29	M1043/M1044 HMMWV Hardback w/driver & "A" driver	1	II MEF	III	Goettge Field House	II	TT Elementary (Shelter) TT-84
30	M1043/M1044 HMMWV Hardback w/driver & "A" driver	1	II MEF	III	Goettge Field House	II	Brewster Middle School (Shelter) 883
31	M1043/M1044 HMMWV Hardback w/driver & "A" driver	1	II MEF	III	Goettge Field House	II	WTBN Stone Bay COC RR-11
32	M149 Water Trailer (empty)	2	II MEF	III	Goettge Field House	TBD	If/as directed
33	M149 Water Trailer (empty)	4	II MEF	III	Goettge Field House	TBD	If/as directed
34	M149 Water Trailer (empty)	1	II MEF	III	Goettge Field House	TBD	If/as directed
35	M149 Water Trailer (empty)	1	II MEF	III	Goettge Field House	TBD	If/as directed
36	M149 Water Trailer (empty)	1	II MEF	III	Goettge Field House	TBD	If/as directed
37	M149 Water Trailer (empty)	1	II MEF	III	Goettge Field House	TBD	If/as directed
38	M149 Water Trailer (empty)	1	II MEF	III	Goettge Field House	TBD	If/as directed
39	M149 Water Trailer (empty)	1	II MEF	III	Goettge Field House	TBD	If/as directed

Figure 5-2.--Tactical Vehicles, Equipment, and Personnel

2 6 NOV 2014

Line #	Requirement	#	Sourced By	Deploy at TCC	Deploy To	Further Deploy at TCC	Further Deploy To
40	M149 Water Trailer (empty)	1	II MEF	III	Goettge Field House	II	WTBN Stone Bay COC RR-11
41	M149 Water Trailer (empty)	1	II MEF	III	Goettge Field House	TBD	If/as directed
42	Reserved line#	Ø	-	-	-	-	-
43	Reserved line#	Ø	-	-	-	-	-
44	Reserved line#	Ø	-	-	-	-	-
45	Reserved line#	Ø	-	-	-	-	-
46	Reserved line#	Ø	-	-	-	-	-
47	Reserved line#	Ø	-	-	-	-	-
48	Reserved line#	Ø	-	-	-	-	-
49	Reserved line#	Ø	-	-	-	-	-
50	Reserved line#	Ø	-	-	-	-	-
51	Reserved line#	Ø	-	-	-	-	-
52	Reserved line#	Ø	-	-	-	-	-
53	Forklift, RT 4000 w/operators (alt EBFL)	2	II MEF	III	Goettge Field House	TBD	If/as directed
54	Floodlight Set Trailer Mounted	4	II MEF	III	Goettge Field House	II	2 sets to Main Gate; 1 set to Triangle Outpost Gate; 1 set to Sneads Ferry Gate

Figure 5-2.--Tactical Vehicles, Equipment, and Personnel--Continued

(2) Ambulances (complete with operators, drivers, and SL-3) will report to the Staging Area (normally Goettge Field House) during the first eight hours of TCC III. Once at the Staging Area, the vehicles and personnel will be received, inspected, and organized into movement serials and otherwise prepared for deployment to their final destinations identified in Figure 5-3.

Line #	Requirement	#	Sourced By	Deploy at TCC	Deploy To	Further Deploy at TCC	Further Deploy To
55	M997 HMMWV Hardback Ambulance (SL-3) w/driver & Medical Attendant * See Note	3	II MEF	III	Goettge Field House	II	NAVHOSP NH-100
56	M997 HMMWV Hardback Ambulance (SL-3) w/driver & Medical Attendant * See Note	1	II MEF & NAVHOSP ** See Note	III	Goettge Field House	II	Wallace Creek Gym (Shelter) WC1
57	M997 HMMWV Hardback Ambulance (SL-3) w/driver & Medical Attendant * See Note	1	II MEF & NAVHOSP ** See Note	III	Goettge Field House	II	TT II Elementary (Shelter) TT-84
58	M997 HMMWV Hardback Ambulance (SL-3) w/driver & Medical Attendant * See Note	1	II MEF & NAVHOSP ** See Note	III	Goettge Field House	II	Brewster Middle School (Shelter) 883

Figure 5-3.--Tactical Vehicles (Ambulance), Equipment, and Personnel

*Note: Each M997 High Mobility Multipurpose Wheeled Vehicle Hardback Ambulance should deploy with two back boards with straps, four Army litters, and one fully stocked medical bag. NAVHOSP will provide corpsman support.

2 6 NOV 2014

**Note: Upon the setting of TCC II, NAVHOSP will begin deploying (within two hours) corpsmen, medical supplies, and infant items (formula, diapers, and bottled water) to the designated shelter locations.

(3) Amphibious Assault Vehicles (AAVs). Upon the setting of TCC III, the II MEF DWOC will ensure the AAV senior crew chief reports for instructions, in-person, to the PMO Operations Officer located in Building 3 and to the Marine Corps Engineers School (MCES), Director of Support via telephone (910)450-7890. After contact has been established, the AAV senior crew chief will return to their parent unit and prepare to deploy AAVs/crews upon the setting of TCC IC, or as directed by the MCIEAST-MCB CAMLEJ EOC through the II MEF DWOC (See Figure 5-4). The II MEF DWOC will notify the MCIEAST-MCB CAMLEJ EOC when the tactical vehicles, equipment, and personnel have deployed, and when they have reported to the final destinations.

Line#	Requirement	#	Sourced By	Deploy at TCC	Deploy To
59	AAV w/Crew	2	II MEF	III/IC	MCES Demolition Ammunition Supply Point Courthouse Bay
60	AAV w/Crew	2	II MEF	III/IC	Triangle Outpost Gate
61	AAV w/Crew	2	II MEF	III/IC	Sneads Ferry Gate

Figure 5-4.--Tactical Vehicles (AAV), Equipment, and Personnel

(4) Emergency Power Generation Equipment. Tactical generators and operators (line numbers 62 to 74 in Figure 5-5) are in an "on call" status and will therefore not activate with the DWTF unless specifically requested by the MCIEAST-MCB CAMLEJ EOC. In the event that generators and operators are requested, those generators (identified by line number), complete with operators and SL-3, will report to the Staging Area (normally Goettge Field House) during the first eight hours of TCC III. Once at the Staging Area, the generators and personnel will be received, inspected, and organized into movement serials and otherwise prepared for deployment to their final destinations. Before being further deployed, operators will be directed to the DCRC (Building 1005) for detailed instruction and task assignments. Generators will either be deployed to a final destination on Base or will remain at the staging area in reserve until needed.

Line#	Requirement	#	Sourced By	Deploy at TCC	Deploy To	Further Deploy at TCC	Further Deploy To
62	MEP Operator	2	II MEF	When requested	Goettge Field House	TBD	If/as directed
63	30KW Generator w/Trailer & Operator	1	II MEF	When requested	Goettge Field House	TBD	If/as directed
64	Reserved line#	Ø	-	-	-	-	-
65	60KW Generator w/Trailer & Operator	1	II MEF	When requested	Goettge Field House	TBD	If/as directed
66	60KW Generator w/Trailer & Operator	1	II MEF	When requested	Goettge Field House	TBD	If/as directed
67	60KW Generator w/Trailer & Operator	1	II MEF	When requested	Goettge Field House	TBD	If/as directed
68	100KW Generator w/operator	1	II MEF	When requested	Goettge Field House	TBD	If/as directed
69	100KW Generator w/operator	1	II MEF	When requested	Goettge Field House	TBD	If/as directed
70	3KW Generator	1	II MEF	When requested	Goettge Field House	TBD	If/as directed
71	3KW Generator	1	II MEF	When requested	Goettge Field House	TBD	If/as directed
72	3KW Generator	1	II MEF	When requested	Goettge Field House	TBD	If/as directed
73	3KW Generator	1	II MEF	When requested	Goettge Field House	TBD	If/as directed
74	3KW Generator	1	II MEF	When requested	Goettge Field House	TBD	If/as directed

Figure 5-5.--Emergency Power/Generators and Personnel

3. DCRC Augmentation

a. General. When a Tropical Cyclone threatens MCB CAMLEJ, Public Works activates the DCRC located in Building 1005. The DCRC mission is to coordinate emergency repairs to the public works infrastructure, provide emergency power generation to critical facilities and traffic control devices, and to clear debris off important roads. Because the MCB CAMLEJ Public Works lacks sufficient manpower and equipment resources to meet the needs likely created by a major storm, MCB CAMLEJ requires augmentation in the form of RRTs. RRTs work either directly for the DCRC (lines 75 and 76 in Figure 5-6), or for an Area Commander (lines 77-82 in Figure 5-6) and are used to affect general debris removal or assist specialized crews with large tasks.

b. RRTs. Figure 5-6 breaks down the requirements, locations, and directing authority for a total of 16 RRTs. Two teams, sourced from Camp Lejeune Public Works and eight teams, sourced from II MEF, work under the direction of the DCRC to address issues affecting critical infrastructure and important roads. Six teams—sourced one each from the Area Commands at Camp Geiger, Camp Johnson, Stone Bay, the NAVHOSP, Central Area, and Courthouse Bay—work under the direction of the Area Commanders to address issues within

26 NOV 2014

their home areas. RRTs will be comprised of 13 personnel (including one SNCO designated as the SNCOIC and one corpsman), and are to be equipped as follows:

Seasonal work uniform (two)
Full rain gear
Sleep system including cover and mat
OTV Flak Jacket no plates, no plate carriers
Water system
First aid kit
Flashlight with two sets of batteries
Helmet
Eye protection
Ear protection
Individual hygiene kit
A one-day supply of MREs (three total)

c. During TCC III, supporting commands muster teams, inventory and test equipment, and establish a staging area from which to Base the RRT throughout the storm. RRT staging areas are chosen by the supporting command. Locations should be in strong buildings, in areas safe from flooding, and with good radio reception. Each RRT should deploy with the following equipment/items supplied by the parent command/unit:

Two chainsaws with petroleum, oil, lubricant, and SL3 complete, supplies and extra chains (requires operator's license)
Two cases of MREs
Seven shovels
Five-gallon water cans filled with potable water
PRC-119 or VRC-88
Toolbox (wire cutters, file, box knife, claw hammer, wrenches, socket set, pliers)
Eight-foot pry bar
Cord, 550
Rope (50 feet each 3/8-inch and 1/2-inch nylon braid)

d. During TCC II, the SNCOICs of the eight II MEF-sourced RRTs (Line 76 in Figure 5-6) will report to the MCB CAMLEJ DCRC (Building 1005) for initial instruction. From this point on, these eight teams will be under the TACON of MCB CAMLEJ and will work at the direction of the DCRC for the duration of the emergency. Once instruction has been given, the SNCOICs will return to their teams and remain in an "on-call" status through the remainder of TCC II, I, IC, and IE. In the event that an occurrence must be addressed before or during the storm, the DCRC will select the RRT which is staged closest to the work site and contact the SNCOIC (by telephone, radio, or messenger) to provide specific instruction. Concurrently, Area Commanders' RRTs (lines 77-82 in Figure 5-6) will report to the Area Commander for initial instructions.

Line#	Requirement	#	Sourced By	Deploy at TCC	Deploy To	Further Deploy at TCC	Further Deploy To
75	RRT (13 personnel includes one SNCOIC and one corpsman per team)	2	DCRC	II	SNCOIC only reports to DCRC at TCC II	On-Call	As directed by DCRC
76	RRT (13 personnel includes one SNCOIC and one corpsman per team)	8	II MEF	II	SNCOIC only reports to DCRC at TCC II	On-Call	As directed by DCRC
77	RRT (13 personnel includes one CPO and one corpsman)	1	NAVHOSP	IR	CPO only to Area Commander	As directed by Area Commander	As directed by Area Commander
78	RRT (13 personnel includes one SNCOIC and one corpsman)	1	HQSPTBN	IR	SNCOIC only to Area Commander	As directed by Area Commander	As directed by Area Commander
79	RRT (13 personnel includes one SNCOIC and one corpsman)	1	SOI-E Camp Geiger	IR	SNCOIC only to Area Commander	As directed by Area Commander	As directed by Area Commander
80	RRT (13 personnel includes one SNCOIC and one corpsman)	1	MCCSSS Camp Johnson	IR	SNCOIC only to Area Commander	As directed by Area Commander	As directed by Area Commander
81	RRT (13 personnel includes one SNCOIC and one corpsman)	1	MCES Court-house Bay	IR	SNCOIC only to Area Commander	As directed by Area Commander	As directed by Area Commander
82	RRT (13 personnel includes one SNCOIC and one corpsman)	1	WTBN Stone Bay	IR	SNCOIC only to Area Commander	As directed by Area Commander	As directed by Area Commander

Figure 5-6.--Response/Recovery Teams

e. In addition to the small items of equipment listed under paragraph 3c above, Figure 5-7 identifies heavy equipment for assignment to the RRTs.

26 NOV 2014

Line#	Requirement	#	Sourced By	Pre-Stage at TCC	Pre-Stage At	Further Deploy at TCC	Further Deploy To
83	MK 29/30 MTVR Dump truck, w/winch w/operator & "A" driver	8	II MEF	III	Parent Command	On-Call	As directed by DCRC
84	M1123 HMMWV w/operator & "A" driver	8	II MEF	III	Parent Command	On-Call	As directed by DCRC
85	Forklift 10K, Tram w/bucket	4	II MEF	III	Parent Command	On-Call	As directed by DCRC
86	MK 23/25 truck, 7-ton, w/winch or Dump truck, 7-ton, w/operator & "A" driver	1	Each Area Commander	III	As directed by Area Commander	As directed by Area Commander	As directed by Area Commander
87	M1123 HMMWV w/operator & "A" driver	1	Each Area Commander	III	As directed by Area Commander	As directed by Area Commander	As directed by Area Commander
88	Forklift 10K, Tram w/bucket	1	Each Area Commander	III	As directed by Area Commander	As directed by Area Commander	As directed by Area Commander

Figure 5-7.--Response/Recovery Team Vehicle List

f. Once TCC IR is set, II MEF RRT SNCOIC leaders (Line 76 Figure 5-6) will contact the MCB CAMLEJ DCRC for instructions. During TCC IR, each Area Commander RRT SNCOIC (lines 77-82 Figure 5-6) will keep the MCB CAMLEJ DCRC informed of their activities. The MCB CAMLEJ DCRC will report status/activities to the MCIEAST-MCB CAMLEJ EOC.

4. Emergency Power Generation

a. During destructive weather operations, electrical power may require a controlled shut-down or be interrupted/lost due to commercial power failure. Back-up electrical power needed to power C2, emergency shelters, critical infrastructure, and emergency (military police, fire, and medical) services will be provided by back-up generator power (portable or permanent) within predetermined electrical support requirements.

b. The MCB CAMLEJ DCRC has sufficient resources (personnel and equipment) to support requirements for emergency electrical power during/in the wake of small to moderate-sized storms. Augmentation may be required from II MEF and tenant commands to meet unanticipated requirements or additional requirements that may arise as a result of a particularly destructive storm. Figure 5-5 lists emergency power generation equipment that may be requested by the MCIEAST-MCB CAMLEJ EOC in anticipation of a particularly destructive storm, or as a result of unanticipated requirements. Review of emergency power generation requirements are addressed by the OPT convened by the AC/S, G-3/5 during TCC IV. Decisions regarding the activation of II MEF power generation equipment (as identified in Figure 5-5) will be made at that time. These items of equipment and their associated operators will not deploy to the Staging Area during TCC III unless specifically requested by the MCIEAST-MCB CAMLEJ EOC.

c. In the event of a commercial power failure, facilities where generator power (portable or permanent) cannot be provided will receive priority service to restore lost power. Accordingly, all necessary

precautions should be taken to preserve refrigerated or frozen foods, provide emergency messing, and provide emergency lighting. However, under no circumstances will commands/units hook-up Table of Equipment portable generator assets to facilities or electrical distribution systems WITHOUT THE EXPRESSED AUTHORIZATION OF THE MCIEAST-MCB CAMLEJ PUBLIC WORKS DCRC. If use of T/E portable generators is approved, work will be performed only by MCB CAMLEJ DCRC qualified personnel or other qualified personnel authorized by the MCB CAMLEJ DCRC.

d. During TCC IV, II MEF and tenant commands will test and fuel (with JP-8 fuel) all portable generators intended for use during emergency operations. II MEF DWOC will report the portable generator and operator status to the MCIEAST-MCB CAMLEJ EOC and DCRC. Building Managers assigned to buildings that are slated to receive portable emergency generators will mark the exact location where the portable generator connects to the electrical panel, ensure that there is clear space sufficient to allow the placement of the portable generator next to the electrical panel, and that all personnel assigned to work in the vicinity of the generator are advised of the danger associated with the equipment.

e. During TCC III, all emergency power generation equipment and personnel specifically requested by the MCIEAST-MCB CAMLEJ EOC will report to the Staging Area (normally the Goettge Field House) for reception, inspection, and staging. At this point, any II MEF generator operators will be directed to report to the DCRC (Building 1005) for specific instructions.

f. During TCC II, the DCRC will complete the deployment and testing of emergency power generators.

g. During TCCs I, IC, and IR, final destinations are responsible for providing refueling requirements to the MCIEAST-MCB CAMLEJ EOC. The MCIEAST-MCB CAMLEJ EOC will coordinate and prioritize refueling requirements with the MCB CAMLEJ DCRC. No refueling will be conducted during TCC IE.

h. During TCC IR, portable generators and operators will not redeploy and stand-down until directed by the MCIEAST-MCB CAMLEJ EOC or MCB CAMLEJ DCRC. When directed, portable generators and operators will redeploy to the staging area for accountability purposes. The Staging Area Site Manager will redeploy the tactical communications equipment and personnel to II MEF/parent unit after conducting accountability operations. UNDER NO CIRCUMSTANCES WILL EQUIPMENT AND PERSONNEL REDEPLOY DIRECTLY TO II MEF/PARENT UNITS.

5. Emergency Feeding/MRE Distribution Plan

a. Emergency mess halls, with the exception of one designated emergency mess hall, will close at the onset of TCC IE. In support of destructive weather operations, the AC/S, G-4 will inventory on-hand rations (MREs) and coordinate with the II MEF Food Service Officer to backfill any identified shortages. MREs identified in the Emergency Feeding/MRE Distribution Plan (Figure 5-8) should not be consumed until emergency mess halls have closed (onset of TCC IE).

b. During TCC II, the AC/S, G-4 will coordinate the execution of the Emergency feeding/MRE distribution plan (Figure 5-8).

Building/Location	Boxes	Pallets	Deliver	Pick-up
1 MCIEAST-MCB CAMLEJ EOC	Ø	Ø	Ø	Ø
WC1 Wallace Creek Gym (shelter)	Ø	Ø	Ø	Ø
TT-84 Tarawa Terrace Elementary (shelter)	Ø	Ø	Ø	Ø
833 Brewster Middle School (shelter)	Ø	Ø	Ø	Ø
Goettge Field House	14	Ø	Ø	Ø
NH-100 Naval Hospital	144	3	Yes	Ø
1101 MCIEAST-MCB CAMLEJ Public Works	Ø	Ø	Ø	Ø
BB-49 MCEs Warehouse	240	5	Yes	Ø
55 H&S BN & U.S. Marine Corps Forces, Special Operations Command	144	3	Yes	Ø
1041 MCIEAST-MCB CAMLEJ Brig	22	Ø	Yes	Ø
AS-130 MCAS New River	432	9	Ø	Yes
M-121 Marine Corps Combat Service Support Schools Unit Property	384	8	Yes	Ø
2617 Bachelor Housing	Ø	Ø	Ø	Ø
1070 MCB CAMLEJ Fuel Farm	Ø	Ø	Ø	Ø
AC/S, G-480 School of Infantry (SOI)-E/S-4	336	7	Ø	Yes
24 MCIEAST-MCB CAMLEJ AC/S, G-6/ MITSC	Ø	Ø	Ø	Ø
58 911 Center	Ø	Ø	Ø	Ø

Figure 5-8.--Emergency Feeding/MRE Distribution Plan

26 NOV 2014

Chapter 6

Communications

1. General. MCB CAMLEJ has adopted the WebEOC application as its primary tool for the development, upkeep, and real time dissemination of a working Common Operating Picture (COP). This COP can be viewed and contributed to (with permissions) by Base Staff components, tenants, higher and adjacent military commands, and local civilian emergency managers. Additionally, several redundant means of voice communications are used to ensure the most survivable communications package reasonably possible.

2. Means of Communicationa. COP

(1) WebEOC is an unclassified, web-based, collaborative planning and execution tool that promotes information sharing across all levels of response, management, and command, regardless of geographic location. The MCIEAST-MCB CAMLEJ EOC will develop, maintain, and disseminate a COP using the WebEOC application during destructive weather events that warrant the activation of the EOC.

(2) Additionally, the MCIEAST-MCB CAMLEJ EOC will use the WebEOC tool to collect and track requests for information and support, pass information via the applications messaging feature, and manage tasks associated with the emergency management effort. The WebEOC application messaging feature is the primary means of unsecured electronic mail communication during destructive weather operations. Therefore, it is critically important that all participants in the emergency response and management effort be trained and equipped to access and use the application in all foreseeable circumstances. Assistance with the set-up and use of this application is available through the AC/S, G-3/5.

b. Voice Communication

(1) Telephone. Plain, unsecured telephone is the primary means of voice communications during destructive weather operations.

(2) Enterprise Land Mobile Radio (ELMR). Handheld (black brick portable radio) is the first alternate means of voice communication between fixed emergency management activities and the primary means of voice communications with mobile emergency management activities during destructive weather operations.

(3) Tactical Radio. Military very high frequency (VHF) is the tertiary means of unsecured voice communications between fixed emergency management activities during destructive weather operations.

(4) Secure Telephone. Secure telephone is the primary means of secure voice communication during destructive weather operations.

26 NOV 2014

c. Electronic Mail

(1) Non-secure Internet Protocol Router Network (NIPRnet). NIPRnet is the first means of unsecured electronic mail communication during destructive weather operations.

(2) Secure Internet Protocol Router Network (SIPRnet). SIPRnet is the primary means of secured electronic mail communication during destructive weather operations.

d. Emergency Notification

(1) OMNI. Plain old telephone with direct access to local Area Commanders using a multi-line conference call/broadcast type system.

(2) AtHoc. Network-Centric Emergency Mass Notification System.

(3) Wide Area Network. Simple Mail Transfer Protocol is a standard for electronic mail transmission across Internet Protocol networks.

3. Communications Procedures

a. WebEOC. The AC/S, G-3/5 will establish a WebEOC event within the WebEOC application for each major tropical cyclone that threatens MCB CAMLEJ and any local weather emergency that results in the activation of the MCIEAST-MCB CAMLEJ EOC. The MCIEAST-MCB CAMLEJ EOC staff will notify all concerned activities and individuals using the means of emergency notification identified in paragraph 2d, above. Thereafter, and for the duration of the emergency, WebEOC will serve as the COP tool and primary means for unsecure electronic mail.

b. Voice Communication

(1) Telephone. During emergencies, unsecured telephone will operate as it does during normal operations. Remember to keep EOC phone numbers readily accessible.

(2) ELMR. The ELMR will operate using the talk groups established in Figure 6-1 below.

c. Tactical Radio. Will operate uncovered on 30.300 (primary) and 38.300 (alternate). Tactical radio teams will deploy from the Staging Area to their final destinations late in TCC III or very early in TCC II.

(1) Once the radio teams reach their final destination, it is imperative that they immediately test their equipment and achieve sound radio checks with the MCIEAST-MCB CAMLEJ EOC. Thereafter, weather conditions must be closely monitored so that antennas are struck before the onset of damaging winds.

(2) Once the storm has passed, antennas are reset and communications are re-established with the MCIEAST-MCB CAMLEJ EOC for use during TCC IR.

26 NOV 2014

d. Secure Telephone. During emergencies, secured telephone will operate as it does during normal operations. Remember to keep EOC phone numbers readily accessible.

e. Electronic Mail

(1) NIPRnet. During emergencies, NIPRnet will operate as it does during normal operations for as long as connectivity is maintained. Remember that most MCB CAMLEJ activities are secured during emergency operations and their essential functions are passed to the MCIEAST-MCB CAMLEJ EOC.

(2) SIPRnet. Commands and activities passing secure information via the SIPRnet should advise the intended recipient of the message via plain telephone to ensure quick receipt.

f. Emergency Notification. The MCIEAST-MCB CAMLEJ EOC will use the means of emergency notification described in paragraph 2 above to pass information of a significant and emergent nature as a backup to the WebEOC application.

Legend	CI EOC AG (1000)	CI MCIEAST CMD1 (1001)	CI MCIEAST CMD2 (1002)	CI MCIEAST TAC1 (1003)	CI MCIEAST TAC2 (1004)	CI MCBCCL OPS (1005)	MCBCCL EOC CMD 1 (1006)	MCBCCL EOC CMD 2 (1007)	MCBCCL TAC-1 (1008)	MCBCCL TAC-2 (1009)	MCBCCL TAC-3 (1010)	MCBCCL TAC-4 (1011) Staging	MCBCCL TAC-5 (1012) Shelter	MCBCCL TAC-6 (1013) Recovery	MCBCCL TAC-7 (1014)	MCBCCL TAC-8 (1015)	MCBCCL TAC-9 (1016)	MCBCCL TAC-10 (1017)
C-NET CONTROL	400	400	400	400	400	401	400	400	400	400	400	400	400	400	400	400	400	400
X-GUARD	Mhz	Mhz	Mhz	Mhz	Mhz	Mhz	Mhz	Mhz	Mhz	Mhz	Mhz	Mhz	Mhz	Mhz	Mhz	Mhz	Mhz	Mhz
M-MONITOR	LMR	LMR	LMR	LMR	LMR	LMR	LMR	LMR	LMR	LMR	LMR	LMR	LMR	LMR	LMR	LMR	LMR	LMR
A-AS REQUIRED	U	U	U	U	U	U	U	U	U	U	U	U	U	U	U	U	U	U
W-WHEN DIRECTED							5	1	2	2	2	5	4	6				
LMR- Land Mobile Radio																		
U-UNCOVERED																		
S-SATCOM																		
HF-HIGH FREQUENCY																		
VHF-VERY HIGH FREQUENCY																		
UHF-ULTRA HIGH FREQUENCY																		
EMISSION	400	400	400	400	400	401	400	400	400	400	400	400	400	400	400	400	400	400
DEVICE	Mhz	Mhz	Mhz	Mhz	Mhz	Mhz	Mhz	Mhz	Mhz	Mhz	Mhz	Mhz	Mhz	Mhz	Mhz	Mhz	Mhz	Mhz
CRYPTO	LMR	LMR	LMR	LMR	LMR	LMR	LMR	LMR	LMR	LMR	LMR	LMR	LMR	LMR	LMR	LMR	LMR	LMR
RESTORATION PRIORITY	U	U	U	U	U	U	U	U	U	U	U	U	U	U	U	U	U	U
UNITS																		
MCIEAST-MCB CAMLEJ G-3/5 OPERATIONS-EOC	C	C	C	C	C	C	C	C	C	C	C	C	C	C	C	C	C	C
MCIEAST-MCB CAMLEJ G-3/5 - GOETTGE FIELD HOUSE-STAGING AREA		W	M	A	A	A	X	M	A	A	A	M	M	W	A	A	A	A
NAVAL HOSPITAL		X	M	A	A	A	X	M	A		A		M	W				A
MCIEAST-MCB CAMLEJ / H&S BN WEAPONS TRAINING BATTALION	W	X	M	A	A	A	X	M	M	A	A	M	M	W	A	A	A	A
MCIEAST-MCB CAMLEJ / WALLACE CREEK-SHELTER		W	M	A	A	A	X	M	A	A	A	M	M	W	A	A	A	A
MCIEAST-MCB CAMLEJ / BREWSTER MIDDLE SCHOOL-SHELTER		W	M	A	A	A	X	M	A	A	A	M	M	W	A	A	A	A
MCIEAST-MCB CAMLEJ / TARAWA TERRACE II SCHOOL-SHELTER		W	M	A	A	A	X	M	A	A	A	M	M	W	A	A	A	A
ATLANTIC MARINE CORPS COMMUNITIES - MCB CAMLEJ		W	M	A	A	A	X	M	A	A	A	M	M	W	A	A	A	A
MCIEAST-MCB CAMLEJ SES		X	M				X	M				M		W				
MCIEAST-MCB CAMLEJ SES / PMO		X	M				X	M						W				
MCIEAST-MCB CAMLEJ G-3/5 RCD						X												
MCIEAST-MCB CAMLEJ G-3/5 EOD						X	M											
MCIEAST-MCB CAMLEJ G4 / FUELS						X						M	M	W				
II MEF / G-3 / DWOC																		
2D MARINE DIVISION G-6																		
2D MARINE LOGISTICS GROUP G-6																		
MCAS NEW RIVER						A	X	M	M	A				W				
TRAINING AND EDUCATION COMMAND - TRAINING SUPPORT CENTER							X	M	A	A	A			W				
SOI-EAST																		
SOI-EAST / INFANTRY TRAINING BATTALION							X	M	A	A	A			W				
MCES							X	M				M	M	W				
MCCSSS	W	W	M	A	A	A	X	M	A	A	A	M	M	W	A	A	A	A
FIELD MEDICAL TRAINING BATTALION-EAST							X	M	M	A	A			W				
DEPLOYMENT PROCESSING COMMAND / RESERVE SUPPORT UNIT-EAST		X	M		A		X	M	A	A	A		W					A
MARSOC							X	M	M	A	A			W				

Figure 6-1.--Communications and Information Equipment
(C=Net Control, X=Guarded, M=Monitor, A=As Required, W=When Directed)

2 6 NOV 2014

Chapter 7

Emergency Shelter Operations

1. General. The activation of shelters is a standard component of destructive weather operations. The number of shelters to be activated for a given storm will be identified by the AC/S, G-3/5 during TCC IV. The CO, NAVHOSP will shelter pregnant women and special medical cases while the CG, MCIEAST-MCB CAMLEJ will shelter the general base population. Procedures for the sheltering of pregnant women and special medical cases are described in the NAVHOSP Emergency Operations SOP and will not be discussed further in this document. The CO, H&S BN bears responsibility (on behalf of the CG) for the conduct of emergency shelter operations for the general base population aboard MCB CAMLEJ (hereafter referred to as Emergency Shelter Operations). Specific details regarding the lay down, equipment, staffing, and operation of base emergency shelters can be found in the Installation Emergency Action Plan.

2. Requirement. The Base will maintain the capability to shelter members of the base community during or in the aftermath of severe weather emergencies. The maintenance of emergency shelter facilities for the general base population is a year-round requirement. In the event of shelter activation, the purpose of emergency shelter operations is to ensure the accountability and safety of all persons seeking shelter (displaced persons), reduce the anxiety of displaced persons during the emergency, and provide short-term shelter until displaced persons can return to their homes, or until an appropriate longer-term solution is arranged.

3. Concept of Operation for Emergency Shelters. Emergency Shelter Operations are conducted in three phases, as follows:

a. Preparation Phase. The CO, H&S BN will work in close coordination with MCCS and the DoD Schools Facilities Manager to ensure that shelters are held in readiness for short-notice activation. They will direct periodic drills and participate in Base-wide exercises designed to ensure that equipment and supplies remain serviceable, personnel are trained, and connectivity for the WebEOC application is maintained from the various shelter facilities. The Preparation Phase ends when the CO, H&S BN is notified of a requirement to activate the shelters.

b. Operational Phase

(1) In the event that a non-tropical storm (such as a tornado) necessitates the activation of a shelter, the EOC will notify the CO, H&S BN by the most expedient means available, and a timeline for activation will be agreed upon. Once the shelter(s) are set-up and prepared to receive displaced persons, the Base EOC will assume TACON of the shelter and its staff, and direct the facility to open.

(2) In the event that a tropical cyclone approaches MCB CAMLEJ, the AC/S, G-3/5 convenes an OPT at TCC IV to analyze emergency shelter and other requirements. Based on this analysis, the AC/S, G-3/5 will identify which emergency shelters will be activated in preparation for the coming tropical cyclone.

2 6 NOV 2014

(3) In all cases, the CO, H&S BN is responsible for the set-up and staffing of shelter facilities (done during TCC II in the case of tropical cyclones and when determined during non-tropical storms). During TCC I, the Base EOC will assume TACON of the shelter(s) and its staff and open them to receive displaced persons. The Operational Phase ends when all displaced persons have departed the shelter and the CO, H&S BN is directed to deactivate the shelters.

c. Deactivation, Demobilization, and Recovery Phase. Shelters will deactivate on order from the Base EOC and once all displaced persons have left the shelter. The facilities and their staffs will be returned to the control of the CO, H&S BN for demobilization. The CO, H&S BN will ensure the return of all material assets and personnel to the Staging Area. H&S BN will ensure that a proper general police of facilities is conducted and a joint damage assessment of each facility is conducted alongside MCCS and/or the DoD Schools Facilities Manager. Once demobilization is complete, the CO, H&S BN will ensure that a complete inventory of equipment and supplies is conducted, deficiencies are addressed, and the shelter is again returned to a condition of readiness for short-notice activation as quickly as possible. The deactivation, demobilization, and recovery phase ends when the shelters are returned to a state of preparedness for short-notice activation.

4. Administration and Logistics

a. Administration

(1) Accountability of shelter staff is maintained using the Task Force Roster found in the WebEOC application. The Shelter Team Leader will ensure all members of the shelter staff log into the Task Force Roster, accessible from the control board, in the events WebEOC incident.

(2) Accountability of displaced persons is maintained in hard copy at the shelter and using the Shelter Status Board in the WebEOC application. Shelter staff will check-in displaced persons using hard copy registration forms and maintain a running synopsis of shelter occupancy using the Shelter Status Board, accessible from the control board in the events WebEOC incident, under the sub-category of "Status Boards".

b. Logistics. Shelter team members will subsist in the designated emergency mess hall (or as otherwise directed by the MCIEAST-MCB CAMLEJ EOC) until destructive weather conditions prevent movement of personnel or the mess hall has been closed.

5. Command and Signal

a. Command. The MCIEAST-MCB CAMLEJ EOC will post entries to the MCB CAMLEJ General Information Board in the WebEOC application that marks its assumption and return of tactical control of the shelters from/to the CO, H&S BN.

b. Signal. Shelters will comply with the communications plan contained in Chapter 6 of this Order.

26 NOV 2014

Reports Required

<u>REPORT TITLE</u>	<u>REPORT</u> <u>CONTROL SYMBOL</u>	<u>PAGE</u>
I. Destructive Weather 911 Report	MCIEAST-MCB CAMLEJ-3440.6-01	1-3
II. Serious Incident Report	EXEMPT; Event/Incident (OPREP-3)	1-3
III. Hazard Report	DD-5102-01	1-6
IV. Casualty Report	DD-3040-2; Personnel Casualty Report (PCR)	1-6
V. Destructive Weather Facility Damage Report	MCIEAST-MCB CAMLEJ-3440.6-06	1-6
VI. Destructive Weather After Action Report	MCIEAST-MCB CAMLEJ-3440.6-02	1-6
VII. Destructive Weather Phone and Utility Outage Report	MCIEAST-MCB CAMLEJ-3440.6-03	3-3
VIII. Destructive Weather Equipment Accountability Report	MCIEAST-MCB CAMLEJ-3440.6-05	5-1
IX. Destructive Weather DCRC Status and Activities Report	MCIEAST-MCB CAMLEJ-3440.6-07	5-10
X. Destructive Weather II MEF DWOC Generator and Operator Status Report	MCIEAST-MCB CAMLEJ-3440.6-08	5-11
XI. Destructive Weather Shelter Team Status and Accountability Report	MCIEAST-MCB CAMLEJ-3440.6-04	7-2